

INSIGHTS

- e20191739 **Switch hitter: Bcl11b in T cells and ILC2s**
Christelle Harly and Avinash Bhandoola

REVIEWS

CYTOKINES FOCUS

- e20190314 **Inflammasome signaling and regulation of interleukin-1 family cytokines**
Amy H. Chan and Kate Schroder
- e20191247 **Effects of interleukin-2 in immunostimulation and immunosuppression**
Jonathan G. Pol, Pamela Caudana, Juliette Paillet, Eliane Piaggio, and Guido Kroemer
- e20190945 **GM-CSF in inflammation**
John A. Hamilton
- e20190418 **Biology and therapeutic potential of interleukin-10**
Margarida Saraiva, Paulo Vieira, and Anne O'Garra
- e20191123 **Targeting interleukin-17 in chronic inflammatory disease: A clinical perspective**
Pascale Zwicky, Susanne Unger, and Burkhard Becher
- e20191397 **Interleukin-17 cytokines: Effectors and targets in psoriasis-A breakthrough in understanding and treatment**
Immo Prinz, Inga Sandrock, and Ulrich Mrowietz
- e20190297 **The role of interleukin-17 in tumor development and progression**
Junjie Zhao, Xing Chen, Tomasz Herjan, and Xiaoxia Li
- e20190456 **Targeting the interleukin-17 immune axis for cancer immunotherapy**
Gerardo A. Vitiello and George Miller
- e20191062 **Interleukin-15 (dys)regulation of lymphoid homeostasis: Implications for therapy of autoimmunity and cancer**
Thomas A. Waldmann, Milos D. Miljkovic, and Kevin C. Conlon
- e20191638 **Regulation of the germinal center and humoral immunity by interleukin-21**
Stuart G. Tangye and Cindy S. Ma
- e20190459 **Type-I interferons in atherosclerosis**
Hung-Jen Chen, Sander W. Tas, and Menno P.J. de Winther
- e20190295 **Type III interferons: Balancing tissue tolerance and resistance to pathogen invasion**
Achille Broggi, Francesca Granucci, and Ivan Zanoni
- e20190460 **Pathogenic T cell cytokines in multiple sclerosis**
Catriona A. Wagner, Pamela J. Roqué, and Joan M. Goverman

BRIEF DEFINITIVE REPORTS

- e20190972 **Cell type-specific actions of Bcl11b in early T-lineage and group 2 innate lymphoid cells**
Hiroyuki Hosokawa, Maile Romero-Wolf, Qi Yang, Yasutaka Motomura, Ditsa Levanon, Yoram Groner, Kazuyo Moro, Tomoaki Tanaka, and Ellen V. Rothenberg



ON THE COVER

Immune cells produce and secrete cytokines, soluble messengers that regulate the immune system and can act in an autocrine, paracrine, or endocrine manner. The figure depicts immune cell associates as a group of immune cells with trucks delivering cytokines from the immune cells to their targets. Figure by Neil Smith, neil@neilsmithillustration.co.uk.

e20190848 **Nutrient mTORC1 signaling underpins regulatory T cell control of immune tolerance**
Mytrang H. Do, Xinxin Wang, Xian Zhang, Chun Chou, Briana G. Nixon, Kristelle J. Capistrano, Min Peng, Alejo Efeyan, David M. Sabatini, and Ming O. Li

e20180992 **Endothelial *Cdk5* deficit leads to the development of spontaneous epilepsy through CXCL1/CXCR2-mediated reactive astrogliosis**
Xiu-xiu Liu, Lin Yang, Ling-xiao Shao, Yang He, Gang Wu, Yu-huan Bao, Nan-nan Lu, Dong-mei Gong, Ya-ping Lu, Tian-tian Cui, Ning-he Sun, Dan-yang Chen, Wei-xing Shi, Kohji Fukunaga, Hong-shan Chen, Zhong Chen, Feng Han, and Ying-mei Lu

ARTICLES

e20191030 **c-Maf regulates the plasticity of group 3 innate lymphoid cells by restraining the type 1 program**
Morgan E. Parker, Alejandro Barrera, Joshua D. Wheaton, Matthew K. Zuberbuehler, David S.J. Allan, James R. Carlyle, Timothy E. Reddy, and Maria Ciofani

e20182009 **AP-1 activity induced by co-stimulation is required for chromatin opening during T cell activation**
Masashi Yukawa, Sajjeev Jagannathan, Sushmitha Vallabh, Andrey V. Kartashov, Xiaoting Chen, Matthew T. Weirauch, and Artem Barski

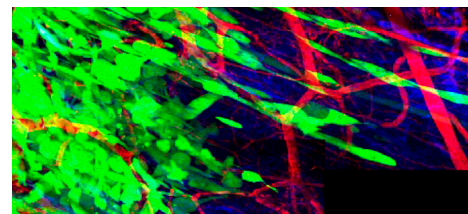
e20190832 **Histone methyltransferase *Nsd2* is required for follicular helper T cell differentiation**
Xuehui Long, Le Zhang, Yang Zhang, Min Min, Bichun Lin, Jingjing Chen, Xiaojie Ma, Sulan Zhai, Zhenming Cai, Yingxia Liu, Yanlai Lu, Nan Che, Wenfeng Tan, Jun Qin, and Xiaoming Wang

e20190428 **Developmental and cellular age direct conversion of CD4⁺ T cells into ROR γ ⁺ or Helios⁺ colon Treg cells**
Alvin Pratama, Alexandra Schnell, Diane Mathis, and Christophe Benoist

e20190682 **Disruption of *mosGILT* in *Anopheles gambiae* impairs ovarian development and *Plasmodium* infection**
Jing Yang, Tyler R. Schleicher, Yuemei Dong, Hyun Bong Park, Jiangfeng Lan, Peter Cresswell, Jason Crawford, George Dimopoulos, and Erol Fikrig

e20181184 **Collective cancer invasion forms an integrin-dependent radioresistant niche**
Anna Haeger, Stephanie Alexander, Manon Vullings, Fabian M.P. Kaiser, Cornelia Veelken, Uta Flucke, Gudrun E. Koehl, Markus Hirschberg, Michael Flentje, Robert M. Hoffman, Edward K. Geissler, Stephan Kissler, and Peter Friedl

e20182325 **Core 1-derived mucin-type O-glycosylation protects against spontaneous gastritis and gastric cancer**
Fei Liu, Jianxin Fu, Kirk Bergstrom, Xindi Shan, J. Michael McDaniel, Samuel McGee, Xia Bai, Weichang Chen, and Lijun Xia



Invasion-associated radioresistance. See <https://doi.org/10.1084/jem.20181184>.