

IN THIS ISSUE

- 1620 Finding NEMO mutations
Splenic schooling dampens inflammation
Dendritic cell paralysis
Melanomas disable DCs
T cells get energized
Heather L. Van Epps

FROM THE ARCHIVE

- 1622 Kicking off adaptive immunity: the discovery of dendritic cells
Alla Katsnelson

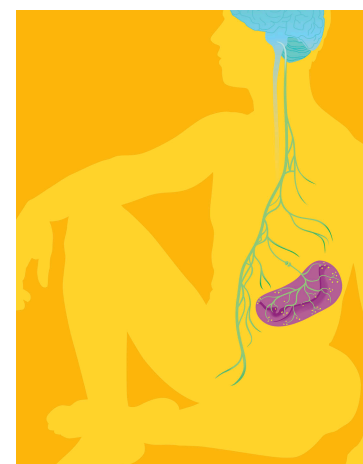
BRIEF DEFINITIVE REPORTS

- 1623 Splenectomy inactivates the cholinergic antiinflammatory pathway during lethal endotoxemia and polymicrobial sepsis
Jared M. Huston, Mahendar Ochani, Mauricio Rosas-Ballina, Hong Liao, Kanta Ochani, Valentin A. Pavlov, Margot Gallowitsch-Puerta, Mala Ashok, Christopher J. Czura, Brian Foxwell, Kevin J. Tracey, and Luis Ulloa
[See news item on page 1620](#)
- 1629 Plasmacytoid dendritic cells of melanoma patients present exogenous proteins to CD4⁺ T cells after FcγRII-mediated uptake
Daniel Benitez-Ribas, Gosse J. Adema, Gregor Winkels, Ina S. Klasen, Cornelis J.A. Punt, Carl G. Figdor, and I. Jolanda M. de Vries
- 1637 Role of HMGB1 in apoptosis-mediated sepsis lethality
Shixin Qin, Haichao Wang, Renqi Yuan, Hui Li, Mahendar Ochani, Kanta Ochani, Mauricio Rosas-Ballina, Chris J. Czura, Jared M. Huston, Ed Miller, Xinchun Lin, Barbara Sherry, Anjali Kumar, Greg LaRosa, Walter Newman, Kevin J. Tracey, and Huan Yang
- 1643 The clone size of peripheral CD8 T cells is regulated by TCR promiscuity
Yi Hao, Nicolas Legrand, and Antonio A. Freitas
- 1651 The BRAF–MAPK signaling pathway is essential for cancer-immune evasion in human melanoma cells
Hidetoshi Sumimoto, Fumie Imabayashi, Tomoko Iwata, and Yutaka Kawakami
[See news item on page 1621](#)
- 1657 FOXO3a-dependent regulation of Puma in response to cytokine/growth factor withdrawal
Han You, Marc Pellegrini, Katsuya Tsuchihara, Kazuo Yamamoto, Georg Hacker, Miriam Erlacher, Andreas Villunger, and Tak W. Mak

JEM

THE
JOURNAL OF
EXPERIMENTAL
MEDICINE

VOLUME 203 NUMBER 7
JULY 10, 2006
www.jem.org



ON THE COVER

Cover image by graphic artist Stacey Posnett (stacey@posnett.net). Image shows the vagus nerve delivering antiinflammatory signals to the spleen. Related article by Huston et al. [See page 1623](#)

1665 Regulation of the energy sensor AMP-activated protein kinase by antigen receptor and Ca^{2+} in T lymphocytes
Peter Tamás, Simon A. Hawley, Rosemary G. Clarke, Kirsty J. Mustard, Kevin Green, D. Grahame Hardie, and Doreen A. Cantrell
[See news item on page 1621](#)

1671 ESAM supports neutrophil extravasation, activation of Rho, and VEGF-induced vascular permeability
Frank Wegmann, Björn Petri, Alexander Georg Khandoga, Christian Moser, Andrej Khandoga, Stefan Volkery, Hang Li, Ines Nasdala, Oliver Brandau, Reinhard Fässler, Stefan Butz, Fritz Krombach, and Dietmar Vestweber

1679 An autosomal dominant major gene confers predisposition to pulmonary tuberculosis in adults
Jamila El Baghdadi, Marianna Orlova, Andrea Alter, Brigitte Ranque, Mohamed Chentoufi, Faouzia Lazrak, Moulay Idriss Archane, Jean-Laurent Casanova, Abdellah Benslimane, Erwin Schurr, and Laurent Abel

1685 A crucial role for interleukin (IL)-1 in the induction of IL-17-producing T cells that mediate autoimmune encephalomyelitis
Caroline Sutton, Corinna Brereton, Brian Keogh, Kingston H.G. Mills, and Ed C. Lavelle

1693 Expression of interleukin (IL)-2 and IL-7 receptors discriminates between human regulatory and activated T cells
Nabila Seddiki, Brigitte Santner-Nanan, Jeff Martinson, John Zaunders, Sarah Sasson, Alan Landay, Michael Solomon, Warwick Selby, Stephen I. Alexander, Ralph Nanan, Anthony Kelleher, and Barbara Fazekas de St. Groth

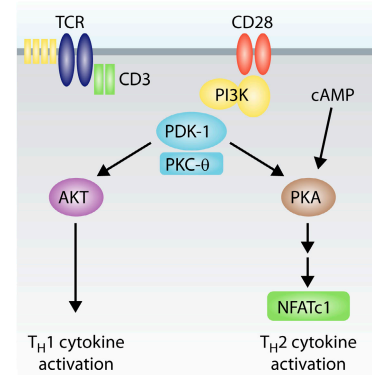
ARTICLES

1701 CD127 expression inversely correlates with FoxP3 and suppressive function of human CD4^+ T reg cells
Weihong Liu, Amy L. Putnam, Zhou Xu-yu, Gregory L. Szot, Michael R. Lee, Shirley Zhu, Peter A. Gottlieb, Philipp Kapranov, Thomas R. Gingeras, Barbara Fazekas de St. Groth, Carol Clayberger, David M. Soper, Steven F. Ziegler, and Jeffrey A. Bluestone

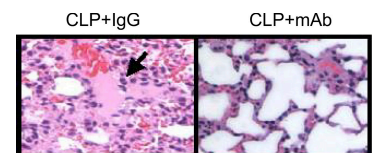
1713 Massive and destructive T cell response to homeostatic cue in CD24-deficient lymphopenic hosts
Ou Li, Xing Chang, Huiming Zhang, Ergun Kocak, Cheng Ding, Pan Zheng, and Yang Liu

1721 Critical roles of the immunoglobulin intronic enhancers in maintaining the sequential rearrangement of *IgH* and *Igk* loci
Matthew A. Inlay, Tongxiang Lin, Heather H. Gao, and Yang Xu

1733 Phosphoinositide-dependent kinase 1 targets protein kinase A in a pathway that regulates interleukin 4
Ajay Nirula, Mary Ho, Hyewon Phee, Jeroen Roose, and Arthur Weiss



The kinases PDK-1 and PKA get together to turn on Th2 cytokines.
[See page 1733](#)



Antibodies against high mobility group box-1 protein (mAb) protect against organ damage during sepsis without decreasing apoptosis.
[See page 1637](#)

- 1745 X-linked susceptibility to mycobacteria is caused by mutations in NEMO impairing CD40-dependent IL-12 production**
Orchidée Filipe-Santos, Jacinta Bustamante, Margje H. Haverkamp, Emilie Vinolo, Cheng-Lung Ku, Anne Puel, David M. Frucht, Karin Christel, Horst von Bernuth, Emmanuelle Jouanguy, Jacqueline Feinberg, Anne Durandy, Brigitte Senechal, Ariane Chappier, Guillaume Vogt, Ludovic de Beaucoudrey, Claire Fieschi, Capucine Picard, Meriem Garfa, Jalel Chemli, Mohamed Bejaoui, Maria N. Tsolia, Necil Kutukculer, Alessandro Plebani, Luigi Notarangelo, Christine Bodemer, Frédéric Geissmann, Alain Israël, Michel Véron, Maïke Knackstedt, Ridha Barbouche, Laurent Abel, Klaus Magdorf, Dominique Gendrel, Fabrice Agou, Steven M. Holland, and Jean-Laurent Casanova

[See news item on page 1620](#)

- 1761 Light chain editing generates polyreactive antibodies in chronic graft-versus-host reaction**
Esther J. Witsch, Hong Cao, Hidehiro Fukuyama, and Martin Weigert
- 1773 Essential role of membrane cholesterol in accelerated BCR internalization and uncoupling from NF- κ B in B cell clonal anergy**
Mathieu Bléry, Lina Tze, Lisa A. Miosge, Jesse E. Jun, and Christopher C. Goodnow
- 1785 Ig β tyrosine residues contribute to the control of B cell receptor signaling by regulating receptor internalization**
Anna Gazumyan, Amy Reichlin, and Michel C. Nussenzweig
- 1795 Essential role of IPS-1 in innate immune responses against RNA viruses**
Himanshu Kumar, Taro Kawai, Hiroki Kato, Shintaro Sato, Ken Takahashi, Cevayir Coban, Masahiro Yamamoto, Satoshi Uematsu, Ken J. Ishii, Osamu Takeuchi, and Shizuo Akira

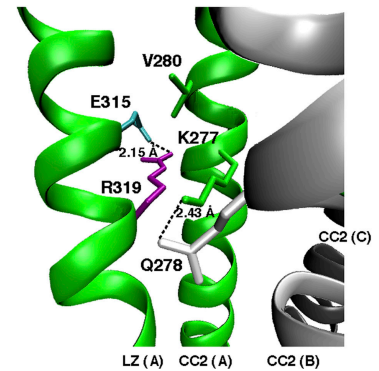
- 1805 Interleukin 12p40 is required for dendritic cell migration and T cell priming after *Mycobacterium tuberculosis* infection**
Shabaana A. Khader, Santiago Partida-Sanchez, Guy Bell, Dawn M. Jelley-Gibbs, Susan Swain, John E. Pearl, Nico Ghilardi, Frederic J. deSavauge, Frances E. Lund, and Andrea M. Cooper
- [See news item on page 1621](#)

- 1817 A major histocompatibility complex class I-dependent subset of memory phenotype CD8⁺ cells**
Onur Boyman, Jae-Ho Cho, Joyce T. Tan, Charles D. Surh, and Jonathan Sprent

1827 Correction

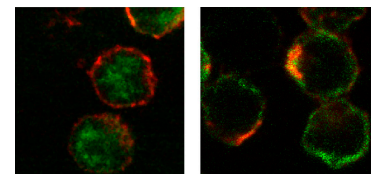
1829 Correction

1831 Correction



Point mutations in the leucine zipper domain of NEMO impair interleukin-12 production in response to CD40 ligation.

[See page 1745](#)



Anergic cells (right) sequester B cell receptors (red) in their cytoplasm in a cholesterol-dependent manner.

[See page 1773](#)