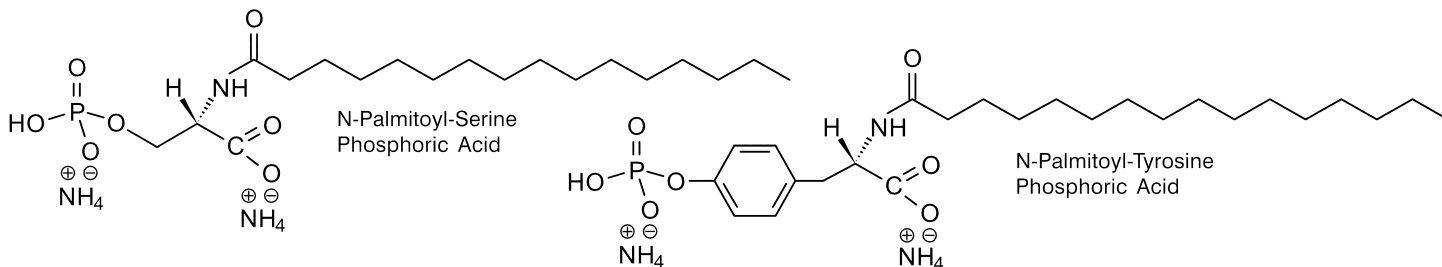


Avanti's New VCAM Expression Inhibitors - N-Palmitoyl-Serine PA & N-Palmitoyl-Tyrosine PA

A recent study* has shown that LPA dose-dependently increased E-selectin and vascular cell adhesion molecule-1 (VCAM-1) cell surface expression..... The selective receptor antagonists N-palmitoyl-serinephosphate and N-palmitoyl-tyrosinephosphate (which inhibits PSP24) completely inhibited LPA-induced VCAM expression..... These findings reveal an important and novel role for LPA and its receptors in inflammatory processes.



Lyso Phosphatidic Acid & Sphingosine-1-Phosphate now in stock at Avanti

*Christina Rizza, N. Leitinger, J. Yue, D. J. Fischer, D. A. Wang, P. T. Shih, H. Lee, G. Tigyi, and J. A. Berliner. (1999).

Lysophosphatidic acid as a regulator of endothelial/leukocyte interaction.

Lab Invest 79(10):1227-35.

Phone 800-227-0651 (205-663-2494 International) or Email info@avantilipids.com for a current catalog, specify CD or printed edition - or download from our web site.



DISCOVER THE DIFFERENCE AT AVANTILIPIDS.COM

Circle No. 3 for more information

Assistant and Associate Professorships in Immunology Institute for Cell Engineering The Johns Hopkins University School of Medicine

The mission of the **Institute for Cell Engineering** at Johns Hopkins is to foster basic scientific research in the broad areas of cellular differentiation and development, with the expectation that such work will lead to therapeutic advances.

The **Immunology Unit** of the Institute for Cell Engineering invites applications for tenure-track faculty positions at the rank of Assistant or Associate Professor. We seek outstanding applicants who will establish vigorous and innovative research programs in an interactive and highly collegial environment. Candidates with interests in areas of fundamental importance to immunology, including immune development, regulation, and therapy, will be considered.

Applicants should submit a curriculum vitae, a description of past accomplishments and future objectives, and should arrange to have three letters of reference sent directly to the search committee. Please send all materials to:

Immunobiology Search Committee
Institute for Cell Engineering
c/o Dr. Stephen Desiderio
Department of Molecular Biology and Genetics
The Johns Hopkins University School of Medicine
725 N. Wolfe St.
Baltimore, MD 21205

The Johns Hopkins University is an Equal Opportunity/Affirmative Action Employer.