

## SUPPLEMENTAL MATERIAL

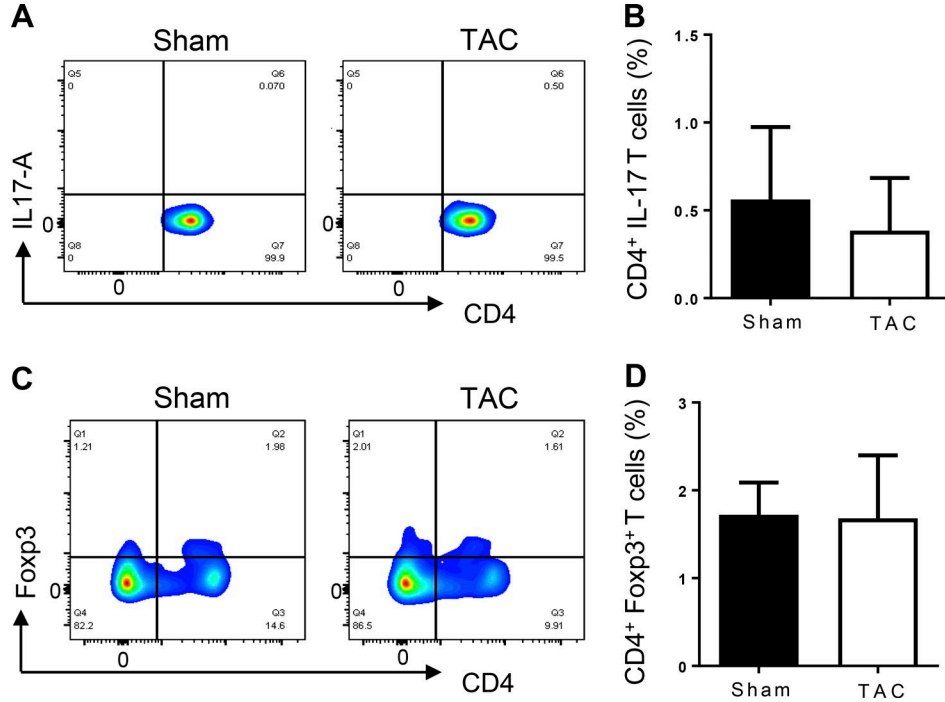
Nevers et al., <https://doi.org/10.1084/jem.20161791>

Figure S1. **The frequency of CD4<sup>+</sup>IL-17A<sup>+</sup> and CD4<sup>+</sup>Foxp3<sup>+</sup> cells is not increased in response to TAC in the mLN.** (A) Representative FACS plots and (B) quantification of the percentage of CD4<sup>+</sup>IL-17A<sup>+</sup> T cells in the mLN after 4 wk of sham or TAC surgery. (C and D) Representative FACS plots (C) and quantification (D) of the percentage of CD4<sup>+</sup>Foxp3<sup>+</sup> T cells in the mLN after 4 wk of sham or TAC surgery. One representative FACS plot is shown from  $n = 5$  mice per group. Error bars indicate SD.

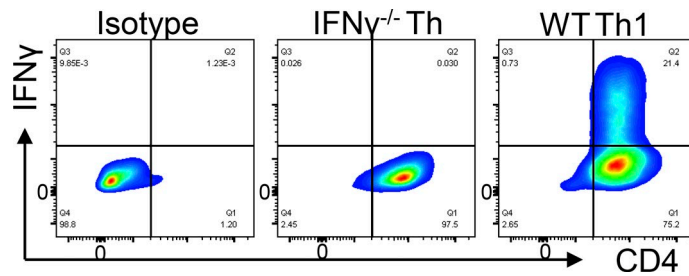


Figure S2. **Th1 and IFN- $\gamma$ <sup>-/-</sup> Th cells used in co-cultures and AT experiments.** Representative FACS plots of the Th1 and IFN- $\gamma$ <sup>-/-</sup> Th cells used in the in vitro and in vivo experiments. Cells were differentiated from WT and IFN- $\gamma$ <sup>-/-</sup> naive CD4<sup>+</sup> T cells in the presence of anti-CD3, anti-CD28, anti-IL-4, IL-12, and IL-2 for 5 d, permeabilized, and stained for FACS. One representative FACS plot is shown from  $n = 5-10$  independent T cell preparations.

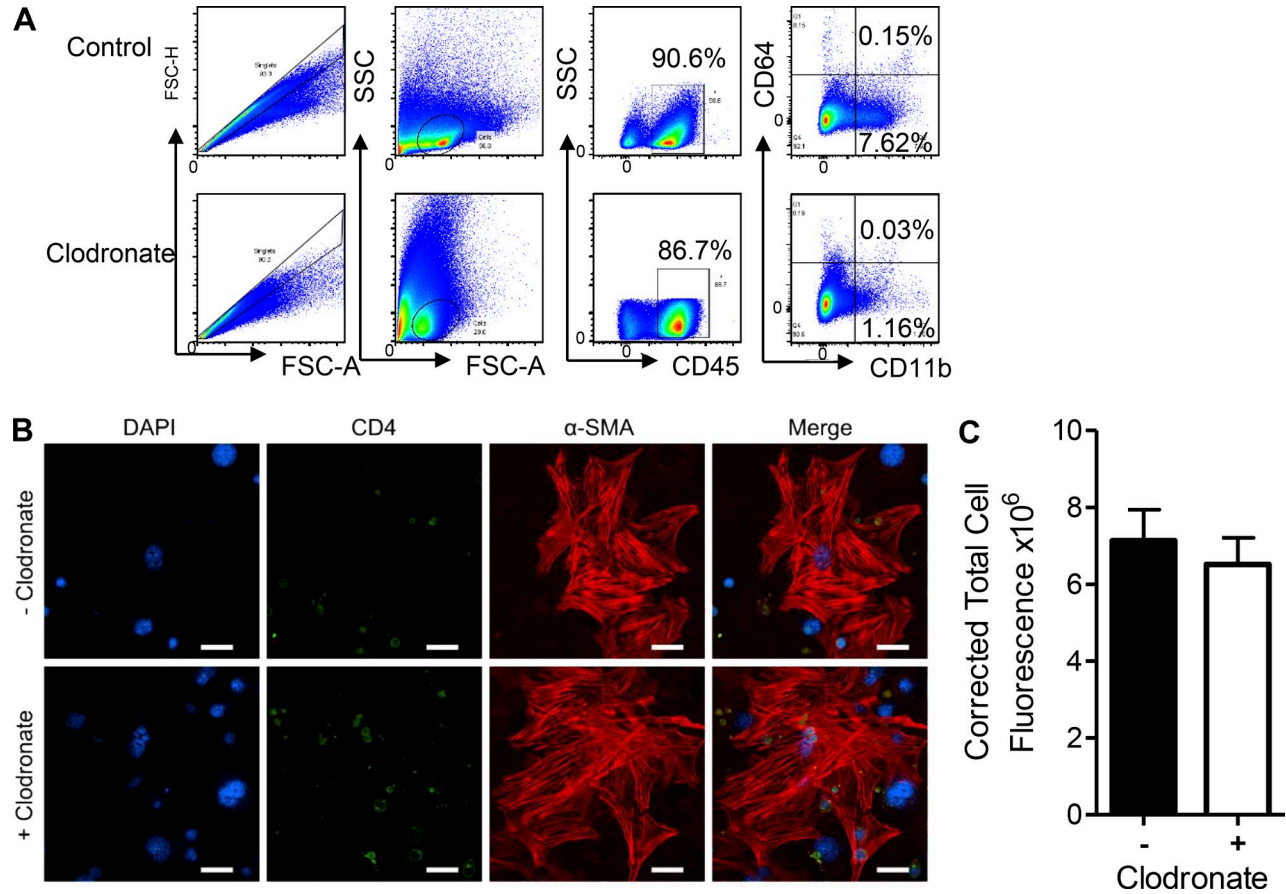


Figure S3. **Clodronate liposome treatment of CFB preparations do not alter CFB-myofibroblast transformation induced by Th1 cell adhesion.** (A) Representative FACS plots and gating strategy of cultured splenocytes treated with 50  $\mu$ l/ml clodronate liposomes or left untreated, stained with the indicated macrophage markers demonstrate clodronate liposome efficacy in macrophage depletion.  $n = 3$  independent experiments. (B) Representative immunofluorescence images and (C) quantification of  $\alpha$ -SMA expression of control and 48 h clodronate liposomes-treated CFB, cultured overnight with Alexa Fluor 488-labeled Th1 cells after the liposome treatment.  $n = 3$  independent experiments. Bars, 50  $\mu$ m. Error bars represent mean  $\pm$  SD.

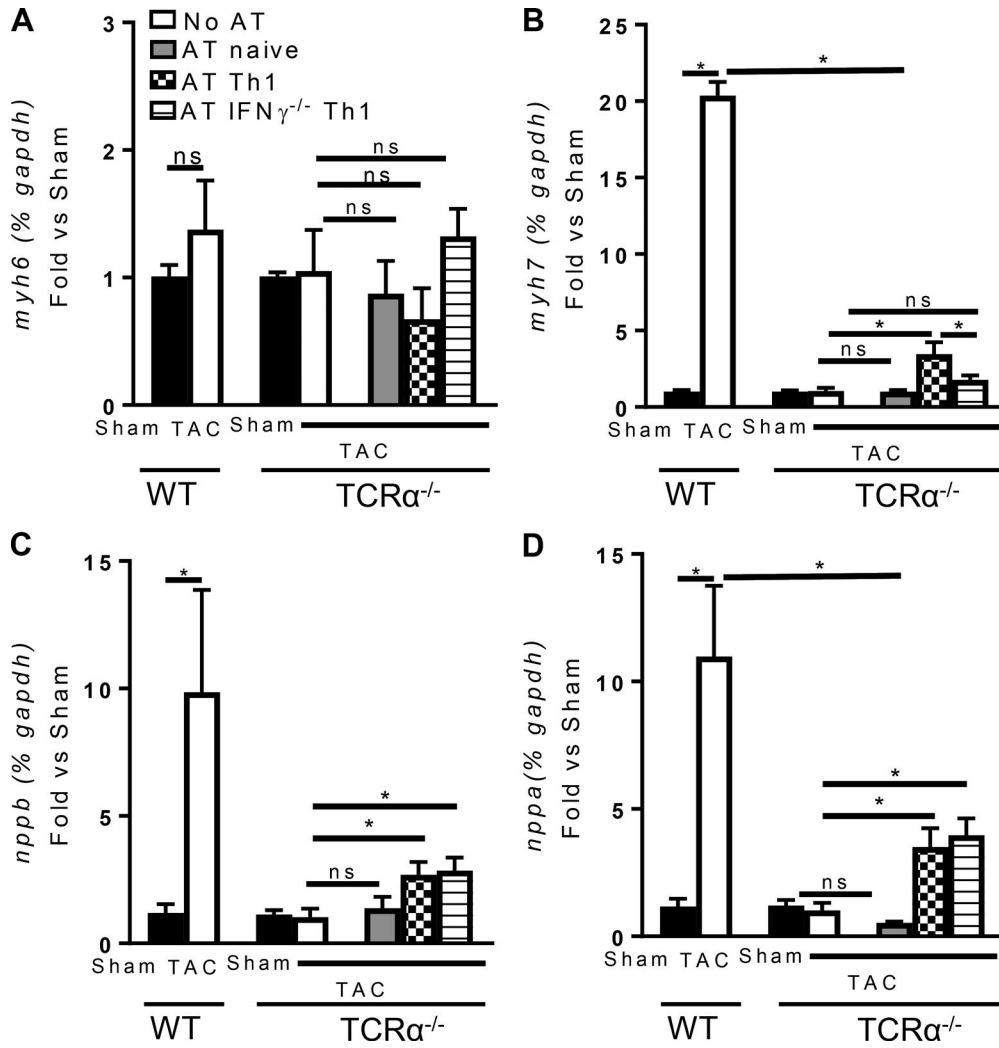


Figure S4. qRT-PCR of the indicated hypertrophic genes in the LV on the indicated mice. (A-D) Error bars represent mean  $\pm$  SD. Statistical significance is shown as \*,  $P \leq 0.05$ ; ANOVA test.  $n = 6-8$  mice per group. ns, not significant.