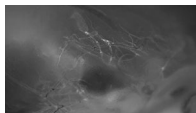


## SUPPLEMENTAL MATERIAL

Aspelund et al., <http://www.jem.org/cgi/content/full/jem.20142290/DC1>



**Video 1. Dura mater lymphatic vasculature in the *Prox1-GFP* mouse.** Video showing dura mater lymphatic vessels in the lateral aspects of the interior portions of the skull in sagittal plane in the *Prox1-GFP* mouse (grayscale).