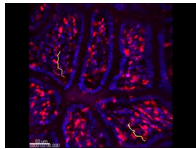
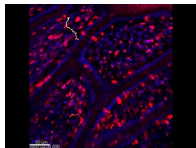


SUPPLEMENTAL MATERIAL

Wang et al., <http://www.jem.org/cgi/content/full/jem.20140646/DC1>



Video 1. Real-time imaging of CD8 α ⁺ IEL migration in *Gpr18*^{-/-} duodenum. This video is a 25-min time-lapse sequence of 9- μ m Z-projection images. CD8 α ⁺ cells are shown in red and nuclei in blue. The epithelium surrounding the six villi in the projection image can be identified by the uniform lines of labeled nuclei. The nuclei within the interior of the villi help identify the lamina propria. Note the frequent movement of CD8 α -PE⁺ IELs between and beneath the epithelial cells. The two tracks show examples of the occasional migration of IELs into the lamina propria. Some of the CD8 α -PE label in the lamina propria may correspond to CD8-independent capture of the antibody by resident cells such as macrophages.



Video 2. Real-time imaging of CD8 α ⁺ IEL migration in *Gpr18*^{-/-} duodenum. This video is a 25-min time-lapse sequence of 9- μ m Z-projection images. CD8 α ⁺ IELs are shown in red and nuclei in blue. The two tracks show examples of the occasional migration of IELs into the lamina propria. The different colors of the tracks correspond to the different time points in the video that the track started. Additional details as for Video 1.