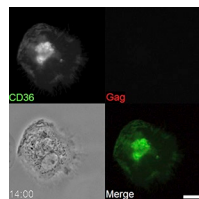
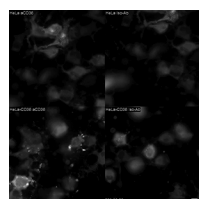


SUPPLEMENTAL MATERIAL

Berre et al., <http://www.jem.org/cgi/content/full/jem.20130566/DC1>



Video 1. Corresponding to Fig. 3. Macrophages were infected with a lentivector encoding CD36-GFP (+SIV-VLP) and 4 d later with HIV-1 Gag-iCherry Δ Env. 8 h later after washes, imaging was performed 1 image/15 min on the Biostation for 2 d. Bar, 10 μ m. The video is representative of the cell behavior observed in two independent experiments.



Video 2. Corresponding to Fig. 9. HeLa and HeLa CD36 were infected overnight with HIV-1 Gag-iGFP, washed, and exposed to medium containing the CD36-specific antibody (FA6-152) or its isotype control. Cells were then imaged every 20 min for 48 h on the Biostation. Time, days:hours:minutes. Bar, 10 μ m. The video is representative of the cell behavior observed in two independent experiments.