

SUPPLEMENTAL MATERIAL

Potian et al., <http://www.jem.org/cgi/content/full/jem.20091473/DC1>

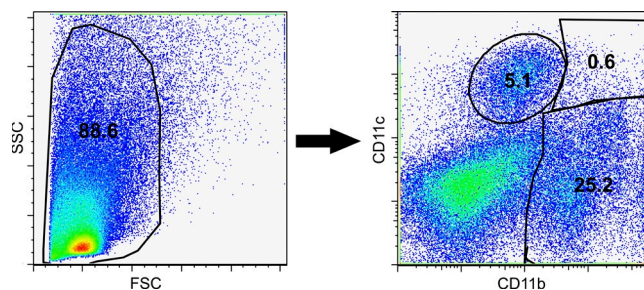


Figure S1. Representative flow cytometry dot plots ($n = 5$ mice/group) of the distribution of $CD11b^+c^-$, $CD11b^-c^+$, and $CD11b^+c^+$ cells in lung cells of Mtb-infected mice.

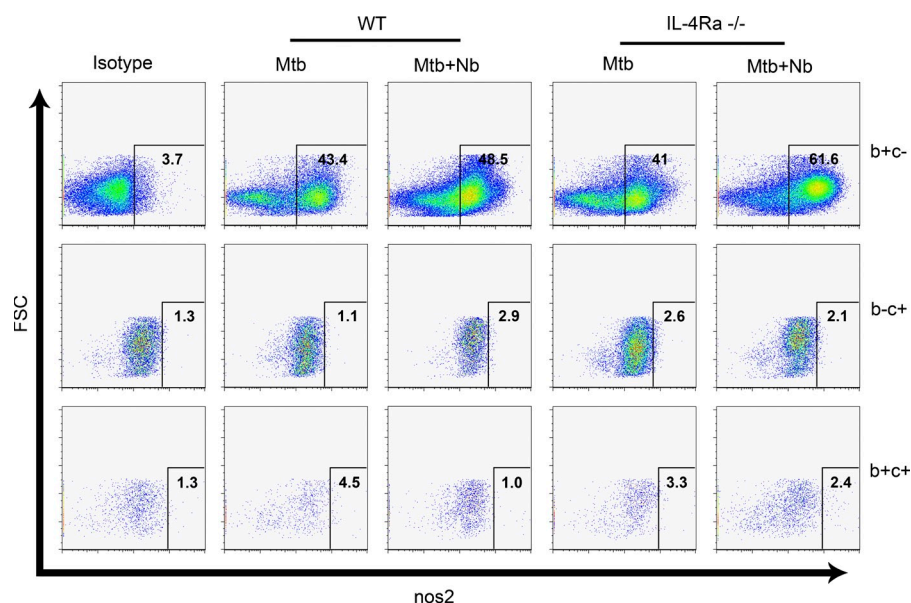


Figure S2. Quantification of NOS2-expressing cells. Total lung cells from WT and IL4R $\alpha^{-/-}$ (KO) mice were stained for CD11b, CD11c, and NOS-2 protein and analyzed by FACS. The figure presents dot plots of NOS2-expressing cells in $CD11b^+$, $CD11c^+$, and $CD11b^+c^+$ populations from a single representative sample ($n = 5$ mice/group).

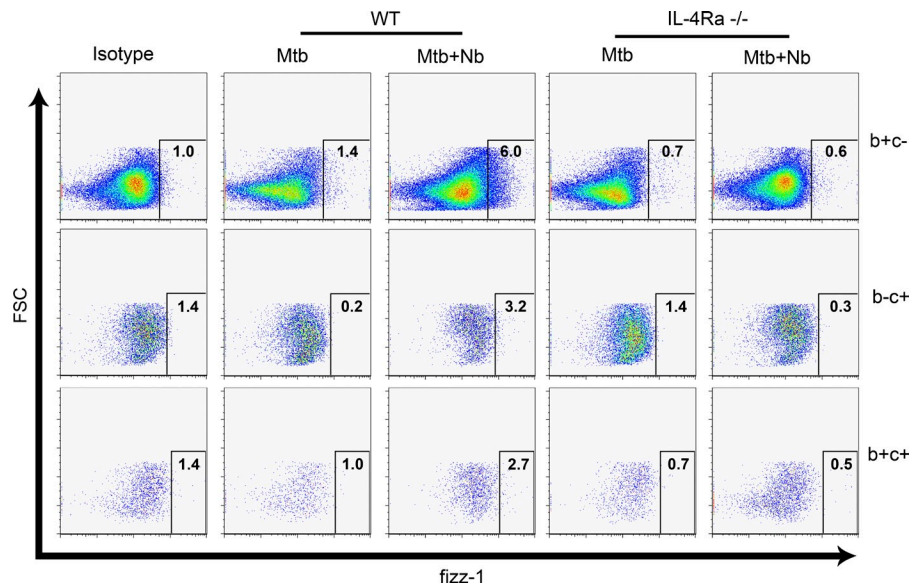


Figure S3. Quantification of Fizz-1-expressing cells. Total lung cells from WT and IL4R α ^{-/-} (KO) mice were stained for CD11b, CD11c, and Fizz-1 protein and analyzed by FACS. The figure presents dot plots of Fizz-1-expressing cells in CD11b⁺, CD11c⁺, and CD11b⁺CD11c⁺ populations from a single representative sample ($n = 5$ mice/group).

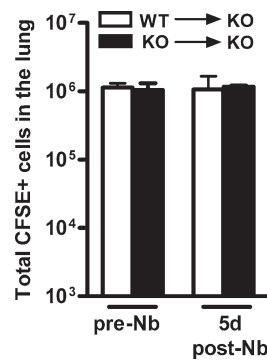


Figure S4. Enumeration of instilled macrophages. 10×10^6 thioglycollate-elicited peritoneal macrophages (PEM) from WT or IL-4R α ^{-/-} (KO) mice were adoptively transferred via the intratracheal route into IL-4R α ^{-/-} hosts. Lungs were harvested either 10 h after the transfer of peritoneal macrophages and before Nb infection or 5 d after Nb infection ($n = 3$ for each group at each time point) and single cell suspensions prepared. CFSE-positive cells present in total lung cells were evaluated by flow cytometry and data are presented as the absolute number of cells (mean \pm SD). Data are representative of two independent experiments.