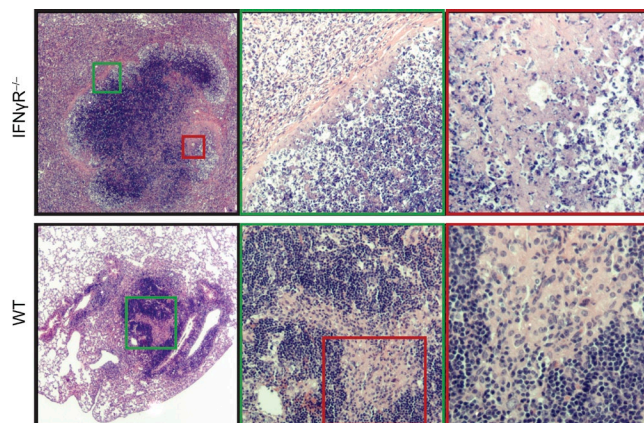


## SUPPLEMENTAL MATERIAL

Nandi and Behar, <http://www.jem.org/cgi/content/full/jem.20110919/DC1>



**Figure S1. Lung histology of Mtb-infected WT and  $IFN-\gamma R^{-/-}$  mice.** Histology of lungs from WT and  $IFN-\gamma R^{-/-}$  mice 33 d after Mtb infection. Prominent features of the  $IFN-\gamma R^{-/-}$  lesion are the formation of a capsule (green box) and necrosis of the cellular infiltrate (red box). WT lesion features an organized lymphocytic infiltrate (green box) surrounding cells with a macrophage-like appearance (red box). These are representative pulmonary lesions of mice analyzed in three independent experiments with three to five mice/group.