

SUPPLEMENTAL MATERIAL

Crellin et al., <http://www.jem.org/cgi/content/full/jem.20091509/DC1>

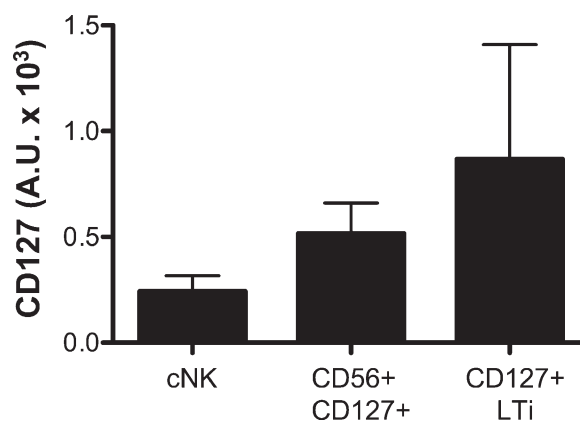


Figure S1. Expanded CD127⁺ LTi-like cell lines maintain CD127 mRNA expression. Relative CD127 mRNA from cell lines expanded ex vivo and normalized to 18S levels. The mean of experiments from three donors is shown. Error bars show SEM.

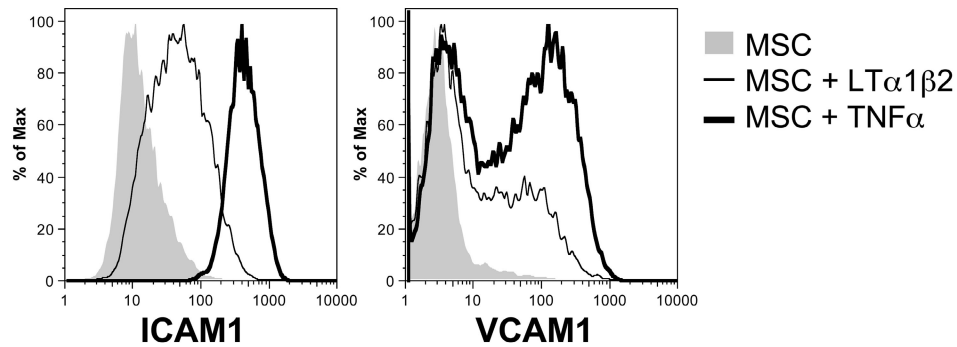
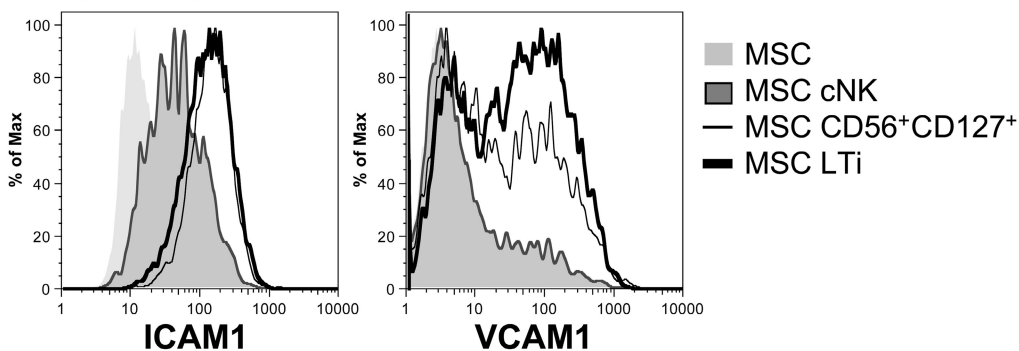
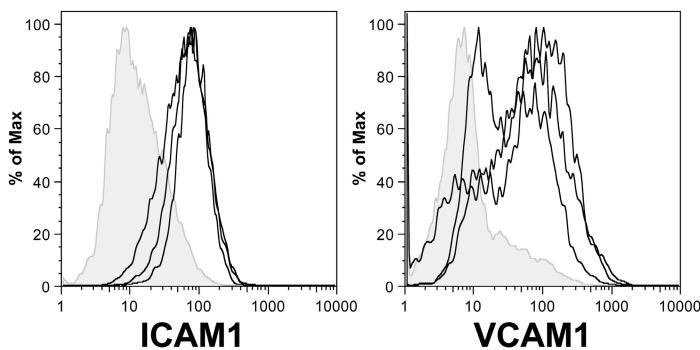
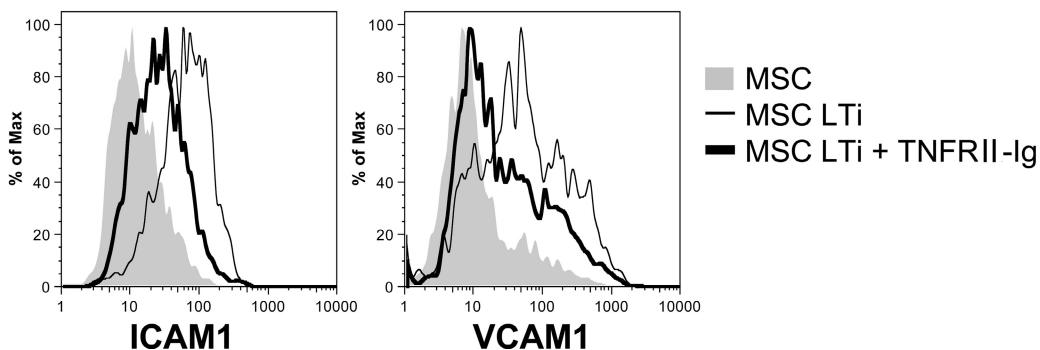
A Positive control**B Cell lines****C Clones****D Inhibition**

Figure S2. Expanded CD127⁺ LTi-like cell lines and clones can stimulate MSCs. Expanded cell lines or clones were cultured with MSCs with 10 ng/ml IL-7 plus cytokines or inhibitory molecules as indicated. Expression of adhesion molecules on MSCs was analyzed by flow cytometry, with stimulatory or blocking molecules added. For A, B, and D, one donor representative of three is shown. For C, three representative clones from one donor are shown.

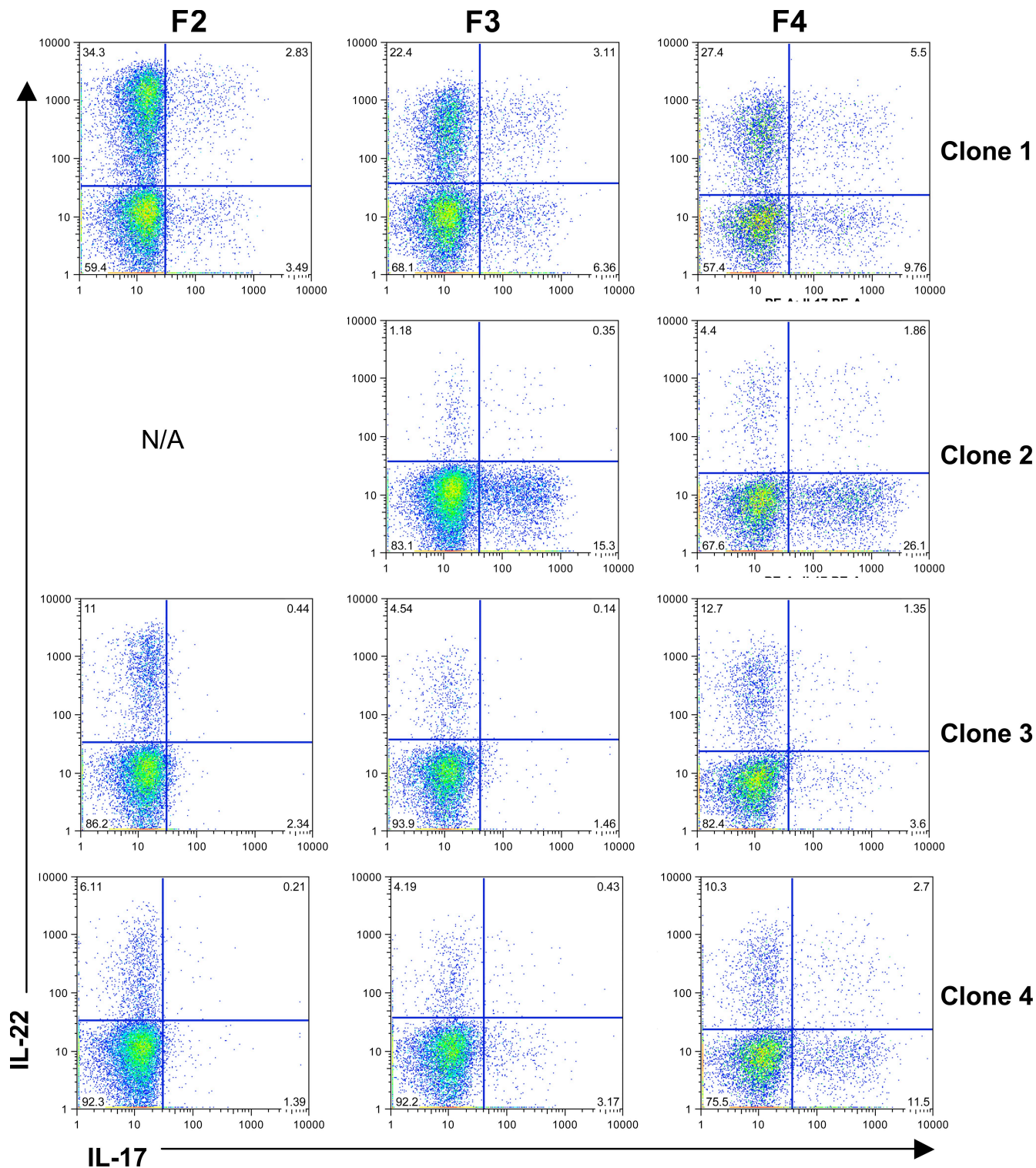


Figure S3. Cytokine production of expanded CD127⁺ LTi-like clones over time. Expanded clones were stimulated with PMA/ionomycin at the end of each feeder cycle (F), and flow cytometry was performed to detect intracellular cytokine production. Four representative clones are shown from one donor. N/A, not available.