

## SUPPLEMENTAL MATERIAL

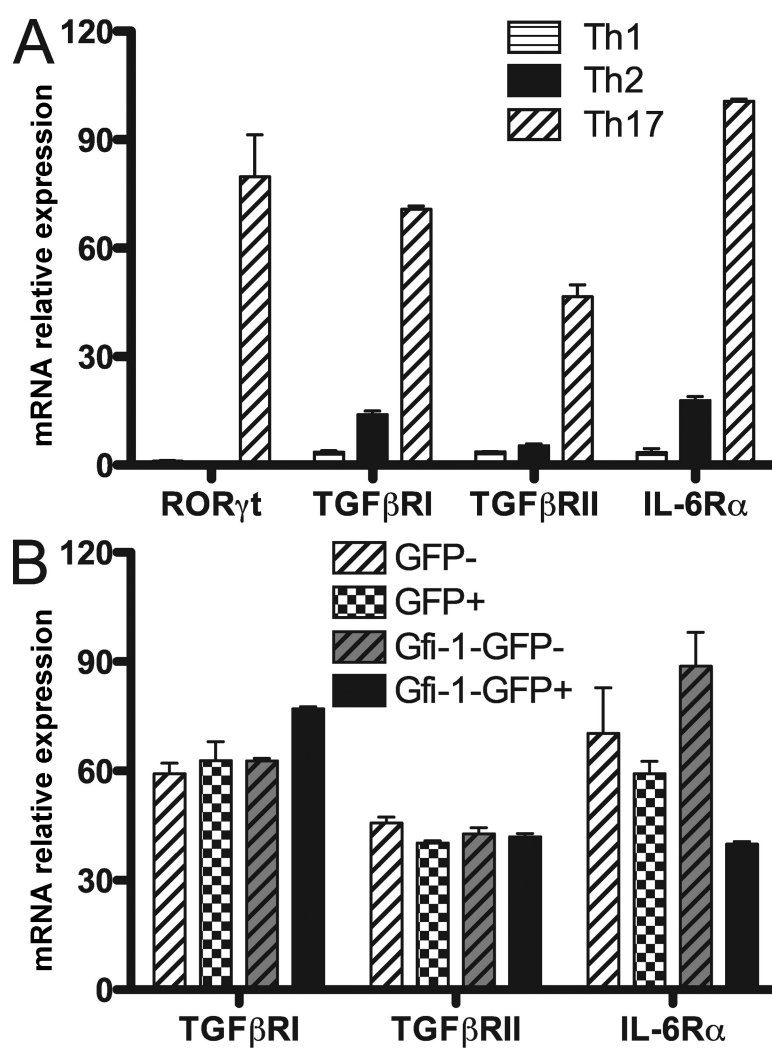
Zhu et al., <http://www.jem.org/cgi/content/full/jem.20081666/DC1>

Figure S1. Gfi-1 can suppress IL-6R $\alpha$  but not TGF- $\beta$ RI or TGF- $\beta$ RII expression. (A) CD4<sup>+</sup> T cells from naive mice were activated under Th1, Th2, and Th17 conditions for 4 d. (B) CD4<sup>+</sup> T cells from naive mice were activated under neutral conditions for 24 h, infected with the GFP-RV or Gfi-1-GFP-RV, and further primed under Th17 conditions. GFP<sup>+</sup> and GFP<sup>-</sup> cells were sorted 24 h after infection. Sorted cells were maintained under Th17 conditions for another 2 d. Cells were harvested and total RNAs were isolated. The expression levels of different genes were assessed by real-time PCR after RT. Error bars represent means  $\pm$  SD.

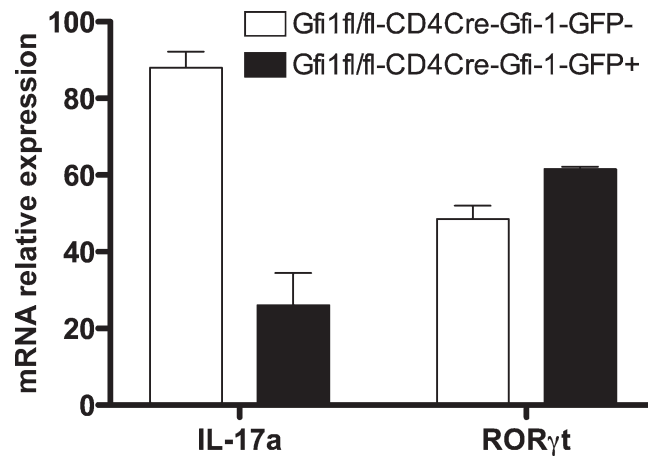


Figure S2. Gfi-1 suppresses IL-17 expression in *Gfi1* cKO cells. CD4<sup>+</sup> T cells from *Gfi1<sup>fl/fl</sup>*-CD4Cre mice were activated under neutral conditions for 24 h, infected with Gfi-1-GFP-RV, and further primed under Th17 conditions. GFP<sup>+</sup> and GFP<sup>-</sup> cells were sorted 24 h after infection. Sorted cells were maintained under Th17 conditions for another 2 d. Cells were harvested and total RNAs were isolated. The expression levels of different genes were assessed by real-time PCR after RT. Error bars represent means  $\pm$  SD.

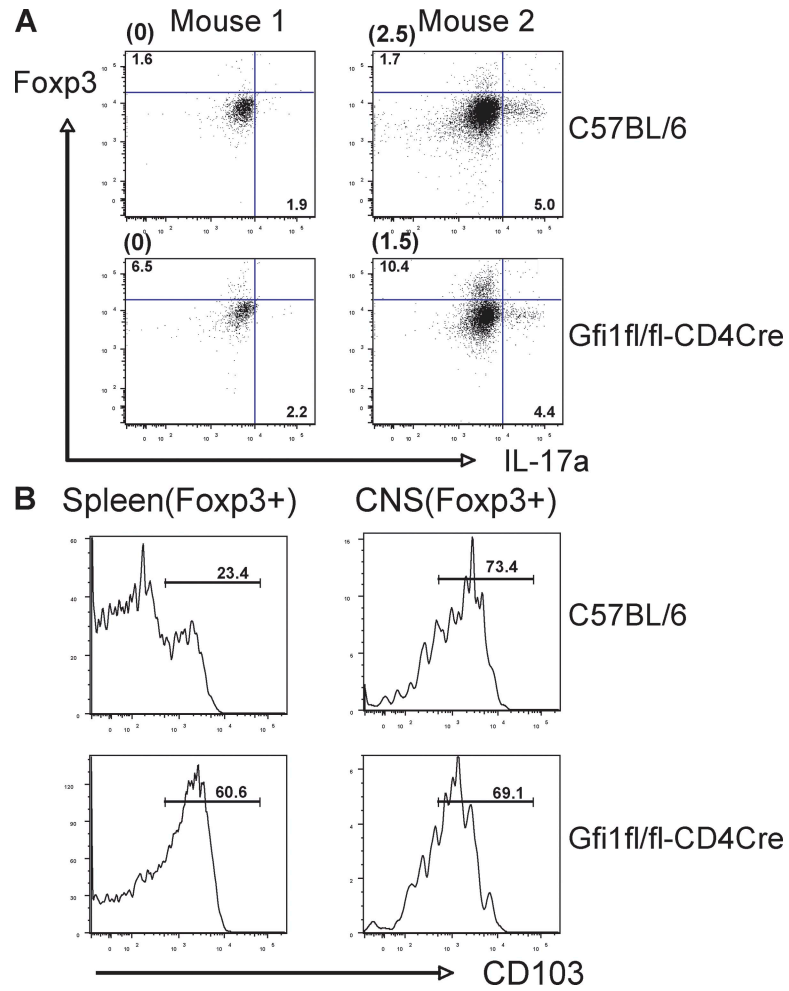


Figure S3. A higher percentage of Foxp3<sup>+</sup> T cells was found in the CNS of *Gfi1* cKO mice than that of wild-type mice, and Treg cells recovered from the CNS were mostly CD103<sup>+</sup>. Cells recovered from (A and B) the CNS or (B) the spleen 2–3 wk after MOG immunization were stimulated with plate-bound anti-CD3/anti-CD28 for 6 h in the presence of monensin during the last 2 h before intracellular staining (A), or were directly stained for CD4, CD103, and Foxp3 (B). The dot plots were gated on CD4<sup>+</sup> splenocytes (A). Numbers indicate the percentage of the cells in each quadrant or gate. The number above plots in A indicates the clinical score of each individual mouse. The histograms in B were gated on Foxp3<sup>+</sup> cells.

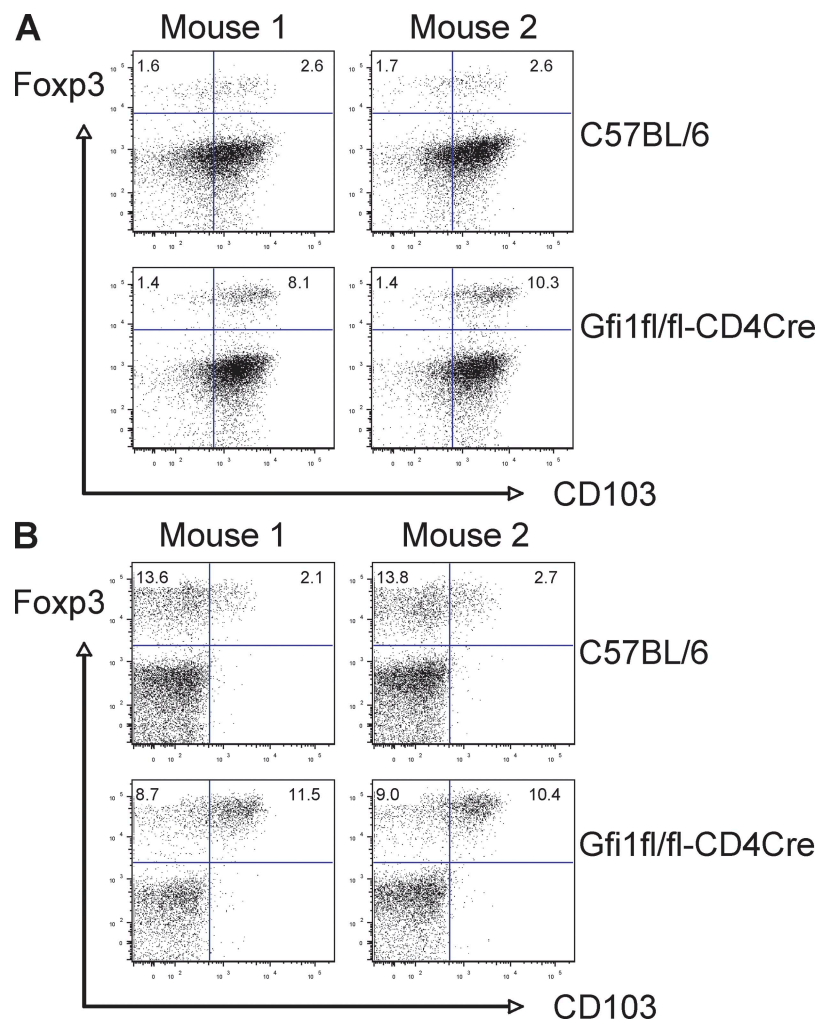


Figure S4. Increased Foxp3<sup>+</sup>CD103<sup>+</sup> population in *Gfi1* cKO mice in response to *T. gondii* infection or *S. mansoni* egg injection. Splenocytes were harvested 12 d after (A) *T. gondii* infection or (B) *S. mansoni* egg injection. Cells were directly stained for CD4, CD103, and Foxp3. Numbers indicate the percentage of the cells in each quadrant. The dot plots were gated on CD4<sup>+</sup> splenocytes.