

SUPPLEMENTAL MATERIAL

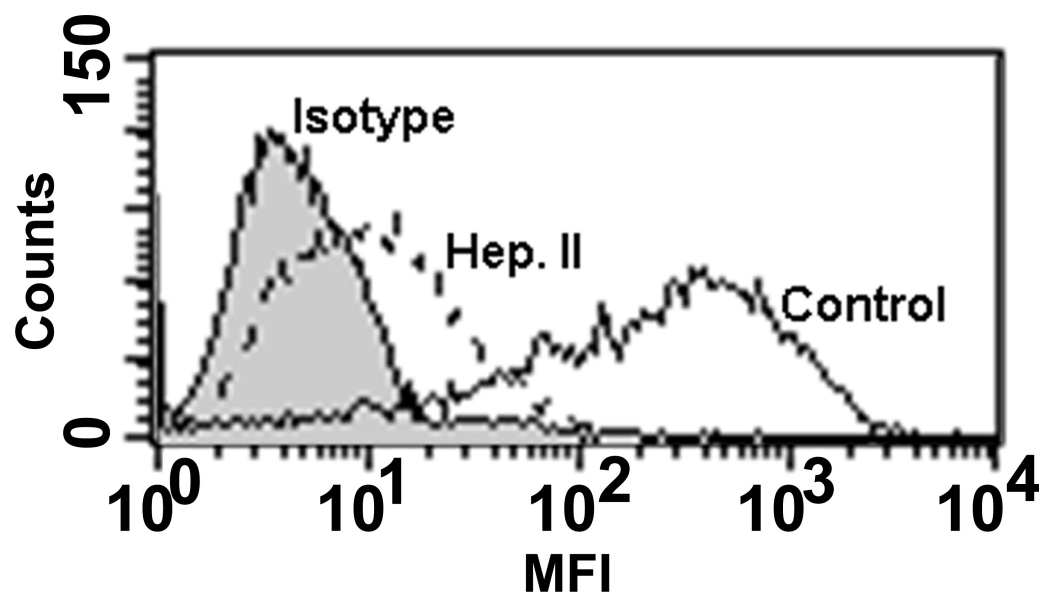
Ceballos et al., <http://www.jem.org/cgi/content/full/jem.20091579/DC1>

Figure S1. Expression of HS in the human intestinal epithelial cell line HT-29. The expression of HS was analyzed by flow cytometry using anti-HS-specific antibodies (clone 10E4) in untreated or heparinase II-treated (5 U/ml, 60 min at 25°C) HT-29 cells. Isotype control (gray histogram) and 10E4 labeled (open histograms) are depicted in the Figure. A representative experiment ($n = 3$) is shown.

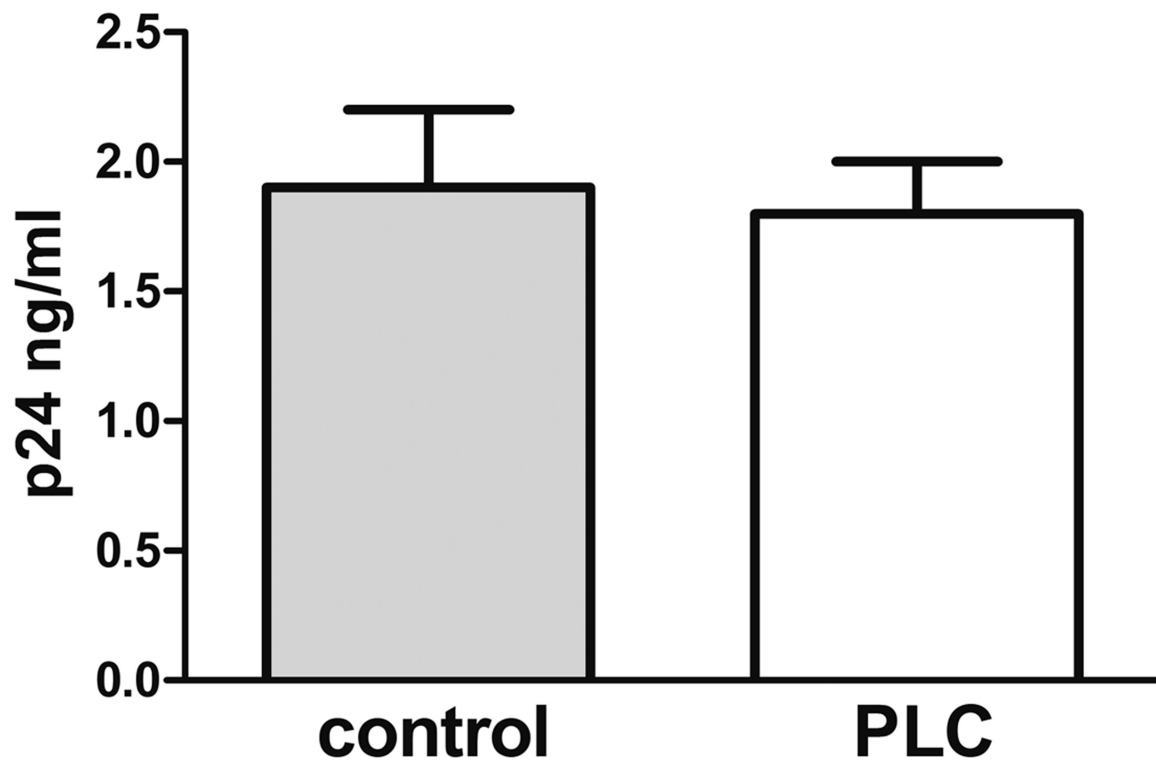


Figure S2. Spermatozoa treatment with PLC did not prevent HIV-1 capture. Spermatozoa were treated with 2 U/ml PLC for 90 min at 37°C, and their ability to capture HIV-1 was then assayed. The results are expressed as the mean \pm SEM of three experiments performed in triplicate.

Table S1. Properties of primary virus isolates

Isolate	Sex	Country	Risk factor	Disease status	Biological phenotype	Subtype
93BR020.1	M	Brazil	Het	AS	X4 and R5	F
96USHIPS4	F	US	Het	AIDS	X4 and R5	B
GARR G4	M	Argentina	MSM	AIDS	X4 and R5	NA
GARR G2	M	Argentina	MSM	AS	R5	NA

M, male; F, female; Het, heterosexual contact; DU, drug user; MSM, men who have sex with men; AS, asymptomatic; NA, information not available.