

**IN MEMORIAM**

- e202009044 **Ernst Joachim Ungewickell: 1950–2020**  
Linton M. Traub and Frances M. Brodsky

**SPOTLIGHTS**

- e202009031 **Moving simply: *Naegleria* crawls and feeds using an ancient Arp2/3-dependent mechanism**  
Buzz Baum and Gautam Dey
- e202009193 **Function through absence: Active RNA exclusion from chromosomes leads to proper cell division**  
Sheila S. Teves
- e202009040 **“Neur”al brain wave: Coordinating epithelial-to-neural stem cell transition in the fly optic lobe**  
Arnaud Ambrosini and Katja Röper

**REVIEWS**

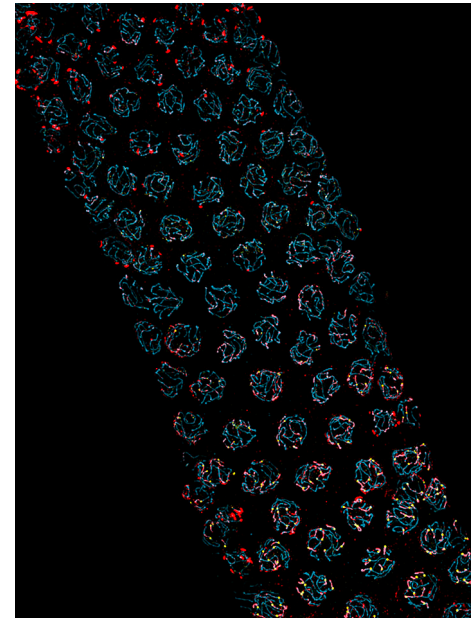
- e202005136 **Keeping track of time: The fundamentals of cellular clocks**  
Colin R. Gliech and Andrew J. Holland
- e202004029 **Mitophagy pathways in health and disease**  
Samuel A. Killackey, Dana J. Philpott, and Stephen E. Girardin

**REPORTS**

- e202003024 **MICOS subcomplexes assemble independently on the mitochondrial inner membrane in proximity to ER contact sites**  
Parker S. Tirrell, Kailey N. Nguyen, Katherine Luby-Phelps, and Jonathan R. Friedman
- e202007158 **Conserved actin machinery drives microtubule-independent motility and phagocytosis in *Naegleria***  
Katrina B. Velle and Lillian K. Fritz-Laylin

**ARTICLES**

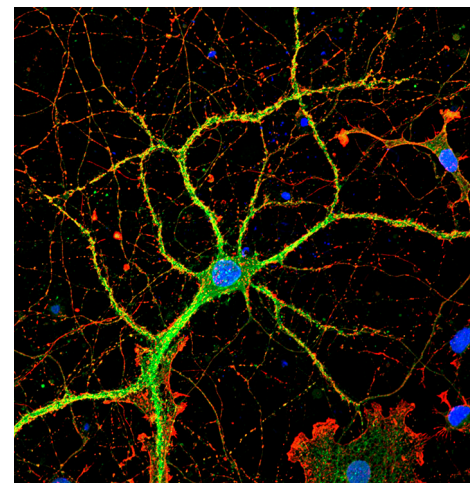
- e201910149 **Loss of CBX2 induces genome instability and senescence-associated chromosomal rearrangements**  
Claudia Baumann, Xiangyu Zhang, and Rabindranath De La Fuente
- e202001063 **The DNA damage response links human squamous proliferation with differentiation**  
Rut Molinuevo, Ana Freije, Lizbeth Contreras, Juan R. Sanz, and Alberto Gandarillas
- e201910148 **Cell division requires RNA eviction from condensing chromosomes**  
Judith A. Sharp, Carlos Perea-Resca, Wei Wang, and Michael D. Blower
- e202006094 **Spatial and temporal control of targeting Polo-like kinase during meiotic prophase**  
James N. Brandt, Katarzyna A. Hussey, and Yumi Kim
- e202004161 **Quality control of 40S ribosome head assembly ensures scanning competence**  
Haina Huang, Homa Ghalei, and Katrin Karbstein



**ON THE COVER**

A region of the *Caenorhabditis elegans* germline showing asymmetric localization of PLK-2 (red) to the synaptonemal complex in late pachytene. Synaptonemal complex component SYP-1 is shown in cyan, and crossover sites marked by COSA-1 are in yellow.  
Image © Brandt et al., 2020  
<https://doi.org/10.1083/jcb.202006094>

- e202002145 **The septin cytoskeleton regulates natural killer cell lytic granule release**  
Prasad V. Phatarpekar, Brittany L. Overlee, Alexander Leehan, Katelynn M. Wilton, Hyoungjun Ham, and Daniel D. Billadeau
- e202006054 **The proline-rich domain promotes Tau liquid-liquid phase separation in cells**  
Xuemei Zhang, Michael Vigers, James McCarty, Jennifer N. Rauch, Glenn H. Fredrickson, Maxwell Z. Wilson, Joan-Emma Shea, Songi Han, and Kenneth S. Kosik
- e202007135 **Combinatorial multivalent interactions drive cooperative assembly of the COPII coat**  
Viktoriya G. Stancheva, Xiao-Han Li, Joshua Hutchings, Natalia Gomez-Navarro, Balaji Santhanam, M. Madan Babu, Giulia Zanetti, and Elizabeth A. Miller
- e201909073 **A conserved myotubularin-related phosphatase regulates autophagy by maintaining autophagic flux**  
Elizabeth A. Allen, Clelia Amato, Tina M. Fortier, Panagiotis Velentzas, Will Wood, and Eric H. Baehrecke
- e202002160 **Spatial regulation of clathrin-mediated endocytosis through position-dependent site maturation**  
Ross T.A. Pedersen, Julian E. Hassinger, Paul Marchando, and David G. Drubin
- e201908212 **p53 deficiency triggers dysregulation of diverse cellular processes in physiological oxygen**  
Liz J. Valente, Amy Tarangelo, Albert Mao Li, Marwan Naciri, Nitin Raj, Anthony M. Boutelle, Yang Li, Stephano Spano Mello, Kathryn Bieging-Rolett, Ralph J. DeBerardinis, Jiangbin Ye, Scott J. Dixon, and Laura D. Attardi
- e202005035 **Tissue-wide coordination of epithelium-to-neural stem cell transition in the *Drosophila* optic lobe requires Neuralized**  
Chloé Shard, Juan Luna-Escalante, and François Schweisguth
- e202003152 **Terminal web and vesicle trafficking proteins mediate nematode single-cell tubulogenesis**  
Zhe Yang, Brendan C. Mattingly, David H. Hall, Brian D. Ackley, and Matthew Buechner
- e201911035 **STRIPAK regulates Slik localization to control mitotic morphogenesis and epithelial integrity**  
Camille Valérie De Jamblinne, Barbara Decelle, Mehrnoush Dehghani, Mathieu Joseph, Neera Sriskandarajah, Kévin Leguay, Basile Rambaud, Sébastien Lemieux, Philippe P. Roux, David R. Hipfner, and Sébastien Carréno
- e201909166 **Novel phospho-switch function of delta-catenin in dendrite development**  
Ryan Baumert, Hong Ji, Adriana Paulucci-Holthausen, Aaron Wolfe, Cari Sagum, Louis Hodgson, Jyothi Arikath, Xiaojiang Chen, Mark T. Bedford, M. Neal Waxham, and Pierre D. McCrea
- e202006178 **ECM deposition is driven by caveolin-1-dependent regulation of exosomal biogenesis and cargo sorting**  
Lucas Albacete-Albacete, Inmaculada Navarro-Lérida, Juan Antonio López, Inés Martín-Padura, Alma M. Astudillo, Alessia Ferrarini, Michael Van-Der-Heyden, Jesús Balsinde, Gertraud Orend, Jesús Vázquez, and Miguel Ángel del Pozo



Rat hippocampal neuron showing dendritic localization of delta-catenin in green and Pdlim5 in red. Nuclei are marked in blue. Image © Baumert et al., 2020 <https://doi.org/10.1083/jcb.201909166>