

PEOPLE & IDEAS

- 2975 **Dan Davis: Up close and personal with immune cells**
Nicole Inforinato

SPOTLIGHTS

- 2977 **Neuronal endosomes to lysosomes: A journey to the soma**
Vineet Vinay Kulkarni and Sandra Maday
- 2981 **Cell cycle pacemaker keeps adhesion in step with division**
Ronen Zaidel-Bar
- 2983 **Natural killers shed attachments to kill again**
James H. Felce and Michael L. Dustin

REVIEWS

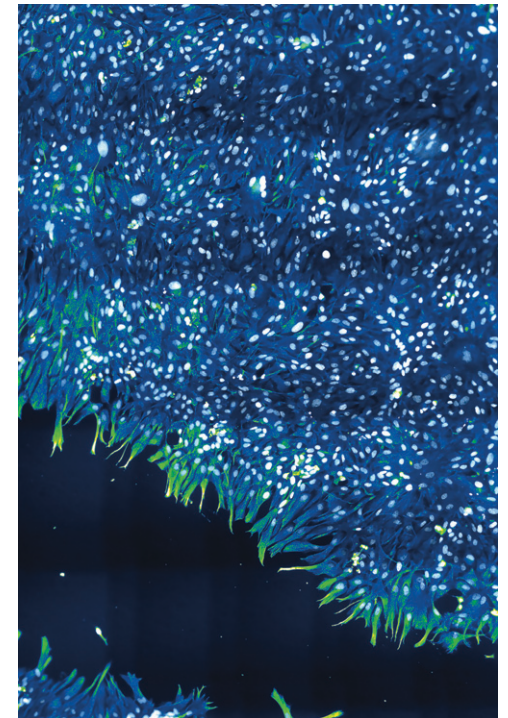
- 2987 **Transcriptional regulation of cell shape during organ morphogenesis**
Aravind Sivakumar and Natasza A. Kurpios

REPORTS

- 3007 **NOD is a plus end-directed motor that binds EB1 via a new microtubule tip localization sequence**
Anna A. Ye, Vikash Verma, and Thomas J. Maresca
- 3019 **Cdk1 phosphorylation of the dynein adapter Nde1 controls cargo binding from G2 to anaphase**
Caitlin L. Wynne and Richard B. Vallee
- 3031 **Intermediate filaments control collective migration by restricting traction forces and sustaining cell-cell contacts**
Chiara De Pascalis, Carlos Pérez-González, Shailaja Seetharaman, Batiste Boëda, Benoit Vianay, Mithila Burute, Cécile Leduc, Nicolas Borghi, Xavier Trepas, and Sandrine Etienne-Manneville
- 3045 ***Drosophila* immune cells extravasate from vessels to wounds using Tre1 GPCR and Rho signaling**
Leila Thuma, Deborah Carter, Helen Weavers, and Paul Martin

ARTICLES

- 3057 **Spindle rotation in human cells is reliant on a MARK2-mediated equatorial spindle-centering mechanism**
Ihsan Zulkipli, Joanna Clark, Madeleine Hart, Roshan L. Shrestha, Parveen Gul, David Dang, Tami Kasichiwin, Izabela Kujawiak, Nishanth Sastry, and Viji M. Draviam
- 3071 **Src activation by Chk1 promotes actin patch formation and prevents chromatin bridge breakage in cytokinesis**
Maria Dandoulaki, Eleni Petsalaki, David Sumpton, Sara Zanivan, and George Zachos
- 3091 **Cytosolic Hsp70 and Hsp40 chaperones enable the biogenesis of mitochondrial β -barrel proteins**
Tobias Jores, Jannis Lawatscheck, Viktor Beke, Mirita Franz-Wachtel, Kaori Yunoki, Julia C. Fitzgerald, Boris Macek, Toshiya Endo, Hubert Kalbacher, Johannes Buchner, and Doron Rapaport
- 3109 **The molecular recognition of phosphatidic acid by an amphipathic helix in Opi1**
Harald F. Hofbauer, Michael Gecht, Sabine C. Fischer, Anja Seybert, Achilleas S. Frangakis, Ernst H.K. Stelzer, Roberto Covino, Gerhard Hummer, and Robert Ernst



ON THE COVER

A monolayer of primary rat astrocytes during collective migration is shown. Cells were stained for vimentin and pseudocolored with Green Fire Blue LUT and nuclei are shown in white. Image © De Pascalis et al., 2018. See page 3031.

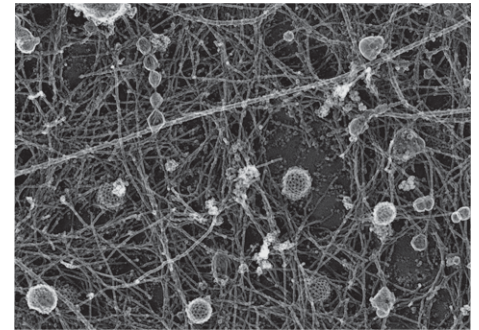
- 3127 **Characterization of LAMP1-labeled nondegradative lysosomal and endocytic compartments in neurons**
Xiu-Tang Cheng, Yu-Xiang Xie, Bing Zhou, Ning Huang, Tamar Farfel-Becker, and Zu-Hang Sheng
- 3141 **Degradation of dendritic cargos requires Rab7-dependent transport to somatic lysosomes**
Chan Choo Yap, Laura Digilio, Lloyd P. McMahon, A. Denise R. Garcia, and Bettina Winckler
- 3161 **A NUMB-EFA6B-ARF6 recycling route controls apically restricted cell protrusions and mesenchymal motility**
Martina Zobel, Andrea Disanza, Francesca Senic-Matuglia, Michel Franco, Ivan Nicola Colaluca, Stefano Confalonieri, Sara Bisi, Elisa Barbieri, Giusi Caldieri, Sara Sigismund, Salvatore Pece, Philippe Chavrier, Pier Paolo Di Fiore, and Giorgio Scita
- 3183 **p190 RhoGAP promotes contact inhibition in epithelial cells by repressing YAP activity**
Scott R. Frank, Clemens P. Köllmann, Phi Luong, Giorgio G. Galli, Lihua Zou, André Bernards, Gad Getz, Raffaele A. Calogero, Morten Frödin, and Steen H. Hansen
- 3203 **Cell adhesion is regulated by CDK1 during the cell cycle**
Matthew C. Jones, Janet A. Askari, Jonathan D. Humphries, and Martin J. Humphries
- 3219 **Desmoplakin maintains gap junctions by inhibiting Ras/MAPK and lysosomal degradation of connexin-43**
Chen Yuan Kam, Adi D. Dubash, Elisa Magistrati, Simona Polo, Karla J.F. Satchell, Farah Sheikh, Paul D. Lampe, and Kathleen J. Green
- 3237 **Non-canonical Ret signaling augments p75-mediated cell death in developing sympathetic neurons**
Christopher R. Donnelly, Nicole A. Gabreski, Esther B. Suh, Monzurul Chowdhury, and Brian A. Pierchala
- 3255 **Actin polymerization controls cilia-mediated signaling**
Michael L. Drummond, Mischa Li, Eric Tarapore, Tuyen T.L. Nguyen, Baina J. Barouni, Shaun Cruz, Kevin C. Tan, Anthony E. Oro, and Scott X. Atwood
- 3267 **Shedding of CD16 disassembles the NK cell immune synapse and boosts serial engagement of target cells**
Katja Srpan, Ashley Ambrose, Alexandros Karampatzakis, Mezida Saeed, Adam N.R. Cartwright, Karolin Guldevall, Gabriela Dos Santos Cruz De Matos, Björn Önfelt, and Daniel M. Davis

TOOLS

- 3285 **Time-resolved transcriptomics in neural stem cells identifies a v-ATPase/Notch regulatory loop**
Sebastian Wissel, Heike Harzer, François Bonnay, Thomas R. Burkard, Ralph A. Neumüller, and Juergen A. Knoblich
- 3301 **Genome-edited human stem cells expressing fluorescently labeled endocytic markers allow quantitative analysis of clathrin-mediated endocytosis during differentiation**
Daphné Dambournet, Kem A. Sochacki, Aaron T. Cheng, Matthew Akamatsu, Justin W. Taraska, Dirk Hockemeyer, and David G. Drubin

CORRECTIONS

- 3313 **Correction: p190 RhoGAP promotes contact inhibition in epithelial cells by repressing YAP activity**
Scott R. Frank, Clemens P. Köllmann, Phi Luong, Giorgio G. Galli, Lihua Zou, André Bernards, Gad Getz, Raffaele A. Calogero, Morten Frödin, and Steen H. Hansen
- 3315 **Correction: Correlative live and super-resolution imaging reveals the dynamic structure of replication domains**
Wanqing Xiang, M. Julia Roberti, Jean-Karim Hériché, Sébastien Huet, Stephanie Alexander, and Jan Ellenberg



The ultrastructure of clathrin lattices is shown by platinum replica electron microscopy of the cytoplasmic side of the plasma membrane.
Image © Dambournet et al., 2018.
See page 3301.