

NEWS

In This Issue

956

- Direct is correct
- A MAP's stabilizing mechanism
- Escaping a checkpoint
- Serum keeps order in the wound
- Neurons survive with NCS-1

N. LeBrasseur

Research Roundup

958

- Analogue brains
- Curing TB with sunlight
- Stepwise receptor activation
- Nuclear actin filaments
- Kinetochore to order

W.A. Wells

From The Archive

960

- Skeleton crew
- Cyclin localization controls activity

M. Leslie

REVIEWS

Comments

963

Controversy fuels trafficking of GPI-anchored proteins

Sebastian Schuck and Kai Simons

Mini-Reviews

967

Molecular functions of nuclear actin in transcription

Piergiorgio Percipalle and Neus Visa

973

The epithelial–mesenchymal transition: new insights in signaling, development, and disease

Jonathan M. Lee, Shoukat Dedhar, Raghu Kalluri, and Erik W. Thompson

RESEARCH ARTICLES

Reports

983

Serpin squamous cell carcinoma antigen inhibits UV-induced apoptosis via suppression of c-JUN NH₂-terminal kinase

Chika Katagiri, Jotaro Nakanishi, Kuniko Kadoya, and Toshihiko Hibino

991

A role for the RabA4b effector protein PI-4K β 1 in polarized expansion of root hair cells in *Arabidopsis thaliana*

Mary L. Preuss, Aaron J. Schmitz, Julie M. Thole, Heather K.S. Bonner, Marisa S. Otegui, and Erik Nielsen

Articles

999

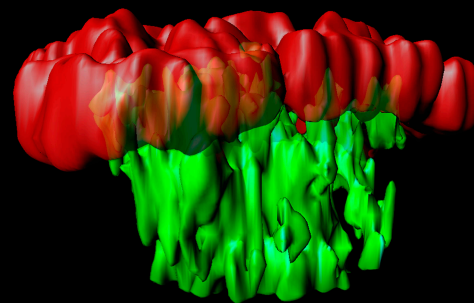
Checkpoint silencing during the DNA damage response in *Caenorhabditis elegans* embryos

Antonia H. Holway, Seung-Hwan Kim, Adriana La Volpe, and W. Matthew Michael

JCB

THE JOURNAL OF CELL BIOLOGY

VOL. 172, NO. 7, MARCH 27, 2006

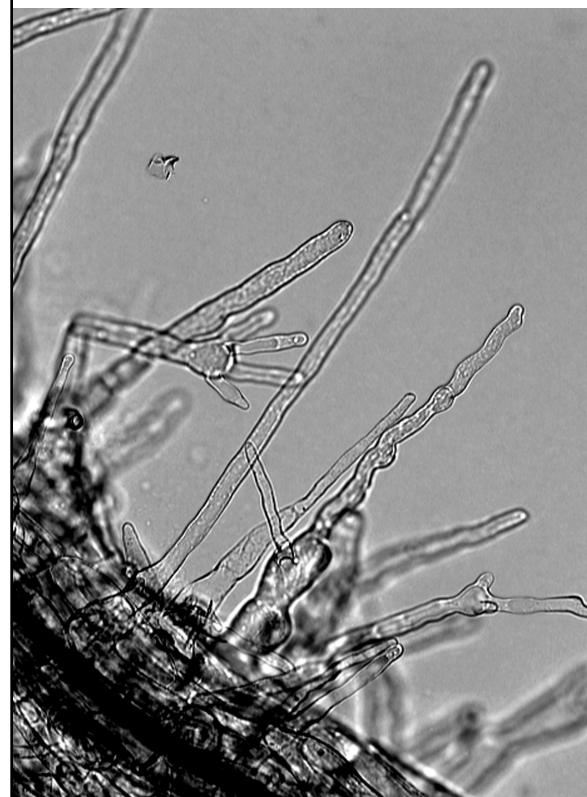


On the cover

GPI-linked proteins (red) are transported directly from the TGN (green) to the apical surface in polarized epithelial cells.

See pages 1023 and 1035.

- 1009** **Stu2p binds tubulin and undergoes an open-to-closed conformational change**
Jawdat Al-Bassam, Mark van Breugel, Stephen C. Harrison, and Anthony Hyman
- 1023** **GPI-anchored proteins are directly targeted to the apical surface in fully polarized MDCK cells**
Simona Paladino, Thomas Pocard, Maria Agata Catino, and Chiara Zurzolo
- 1035** **Vectorial insertion of apical and basolateral membrane proteins in polarized epithelial cells revealed by quantitative 3D live cell imaging**
Wei Hua, David Sheff, Derek Toomre, and Ira Mellman
- 1045** **CHMP5 is essential for late endosome function and down-regulation of receptor signaling during mouse embryogenesis**
Jae-Hyuck Shim, Changchun Xiao, Matthew S. Hayden, Ki-Young Lee, E. Sergio Trombetta, Marc Pypaert, Atsuki Nara, Tamotsu Yoshimori, Bettina Wilm, Hediye Erdjument-Bromage, Paul Tempst, Brigid L.M. Hogan, Ira Mellman, and Sankar Ghosh
- 1057** **CpG-induced tyrosine phosphorylation occurs via a TLR9-independent mechanism and is required for cytokine secretion**
Miguel A. Sanjuan, Navin Rao, Kuei-Tai A. Lai, Yin Gu, Siqian Sun, Anja Fuchs, Wai-Ping Fung-Leung, Marco Colonna, and Lars Karlsson
- 1069** **Two distinct cytoplasmic regions of the β_2 integrin chain regulate RhoA function during phagocytosis**
Agnès Wiedemann, Jayesh C. Patel, Jenson Lim, Andy Tsun, Yvette van Kooyk, and Emmanuelle Caron
- 1081** **Novel role of neuronal Ca^{2+} sensor-1 as a survival factor up-regulated in injured neurons**
Tomoe Y. Nakamura, Andreas Jeromin, George Smith, Hideaki Kurushima, Hitoshi Koga, Yusaku Nakabeppu, Shigeo Wakabayashi, and Junichi Nabekura
- 1093** **A “traffic control” role for TGF β 3: orchestrating dermal and epidermal cell motility during wound healing**
Balaji Bandyopadhyay, Jianhua Fan, Shengxi Guan, Yong Li, Mei Chen, David T. Woodley, and Wei Li
- 1107** **Correction**



Bulged and branched root hair cells that display irregular changes in directional growth arise in the absence of PI-4K β 1/ β 2 activity in *A. thaliana*.
See page 991.