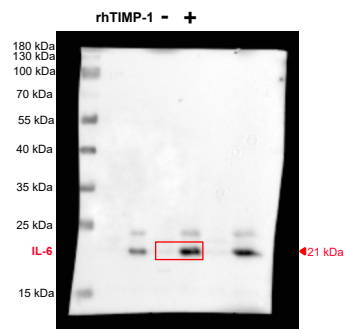
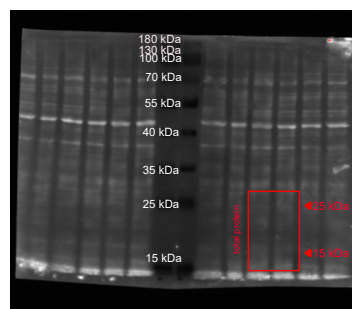


J

IL-6 Western Blot*

**J**

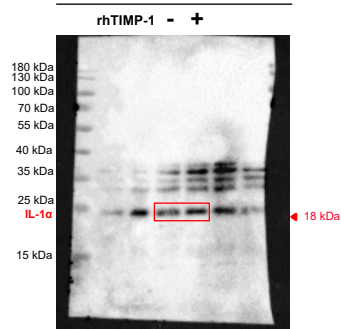
total protein stain (SYPRO Ruby)*



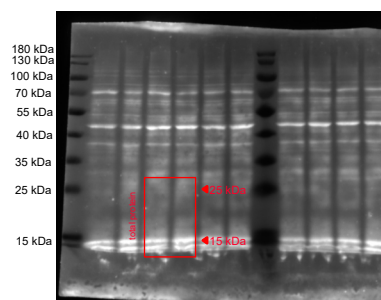
12.5 % SDS Gel

K

IL-1 α Western Blot*

**K**

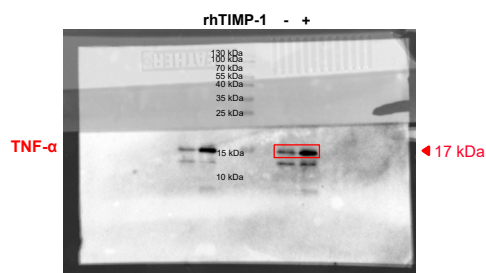
total protein stain (SYPRO Ruby)*



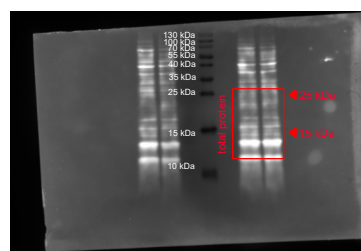
12.5 % SDS Gel

L

TNF- α Western Blot**

**L**

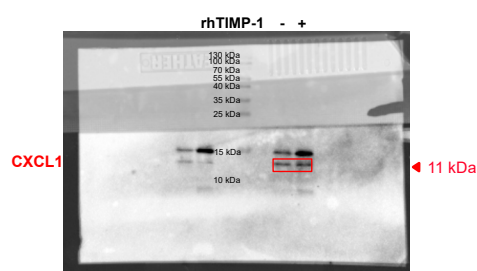
total protein stain (SYPRO Ruby)



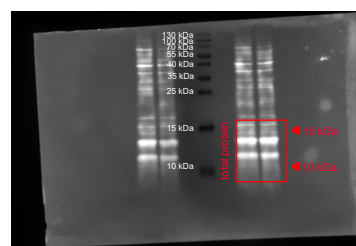
20 % SDS Gel

M

CXCL1 Western Blot**

**M**

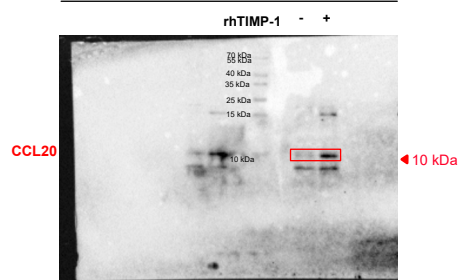
total protein stain (SYPRO Ruby)



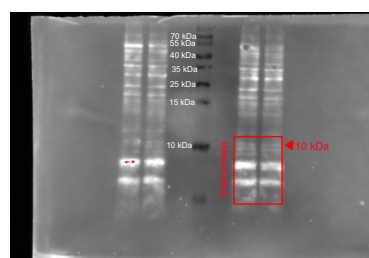
20 % SDS Gel

N

CCL20 Western Blot

**N**

total protein stain (SYPRO Ruby)



20 % SDS Gel

*Total protein stain was performed on whole membranes and cut prior to incubation with primary antibodies. Consequently, total protein stain shows the whole uncut membrane, whereas Western blot membranes only show the respective cut parts.

**TNF- α and CXCL1 were detected on the same membrane and distinguished based on their molecular weight.