

Figure S6. IRE1α inhibition attenuates EMT6 tumor growth and synergizes with anti-PD-L1 antibody. (B) Mice were inoculated orthotopically with WT or IRE1α KO EMT6 cells and tumor growth was measured over 24 days. IB analysis of total tumor lysates **(B)** presented.

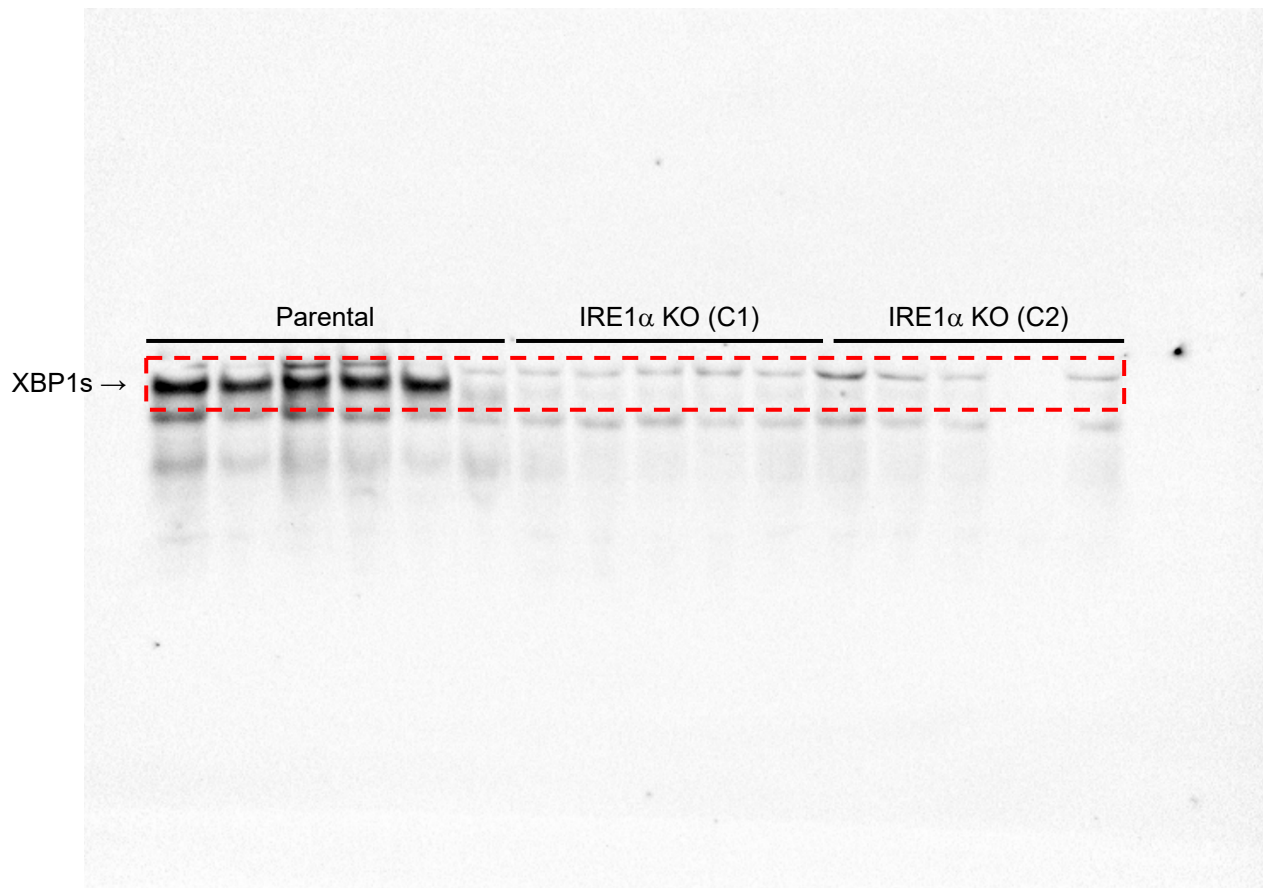
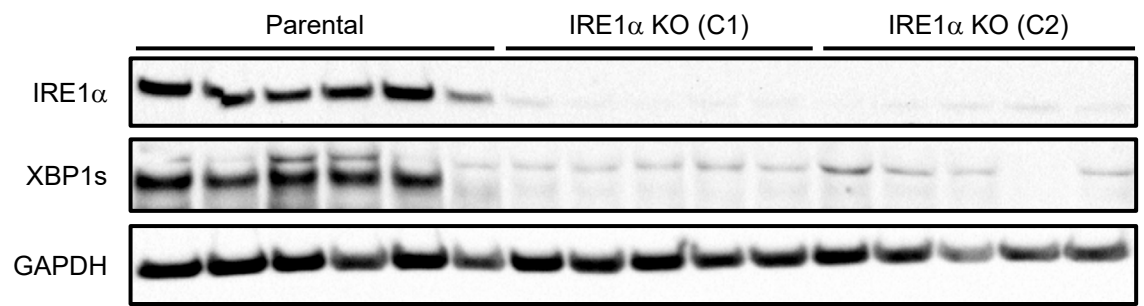


Figure S6. IRE1 α inhibition attenuates EMT6 tumor growth and synergizes with anti-PD-L1 antibody. (B) Mice were inoculated orthotopically with WT or IRE1 α KO EMT6 cells and tumor growth was measured over 24 days. IB analysis of total tumor lysates **(B)** presented.

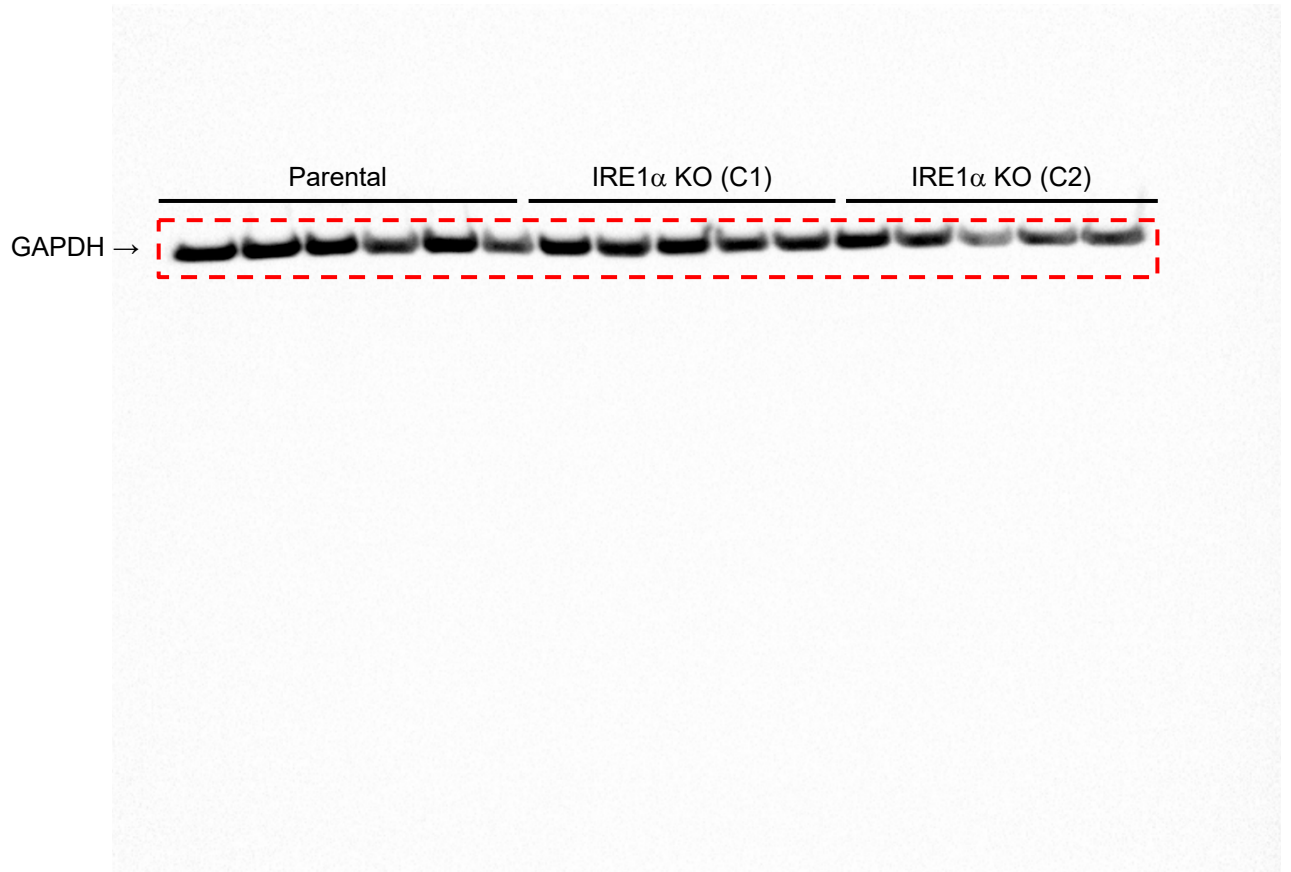
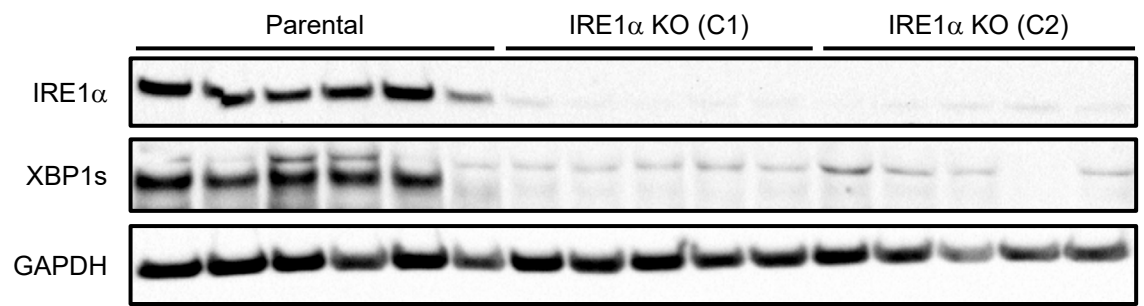


Figure S6. IRE1 α inhibition attenuates EMT6 tumor growth and synergizes with anti-PD-L1 antibody. (B) Mice were inoculated orthotopically with WT or IRE1 α KO EMT6 cells and tumor growth was measured over 24 days. IB analysis of total tumor lysates **(B)** presented.

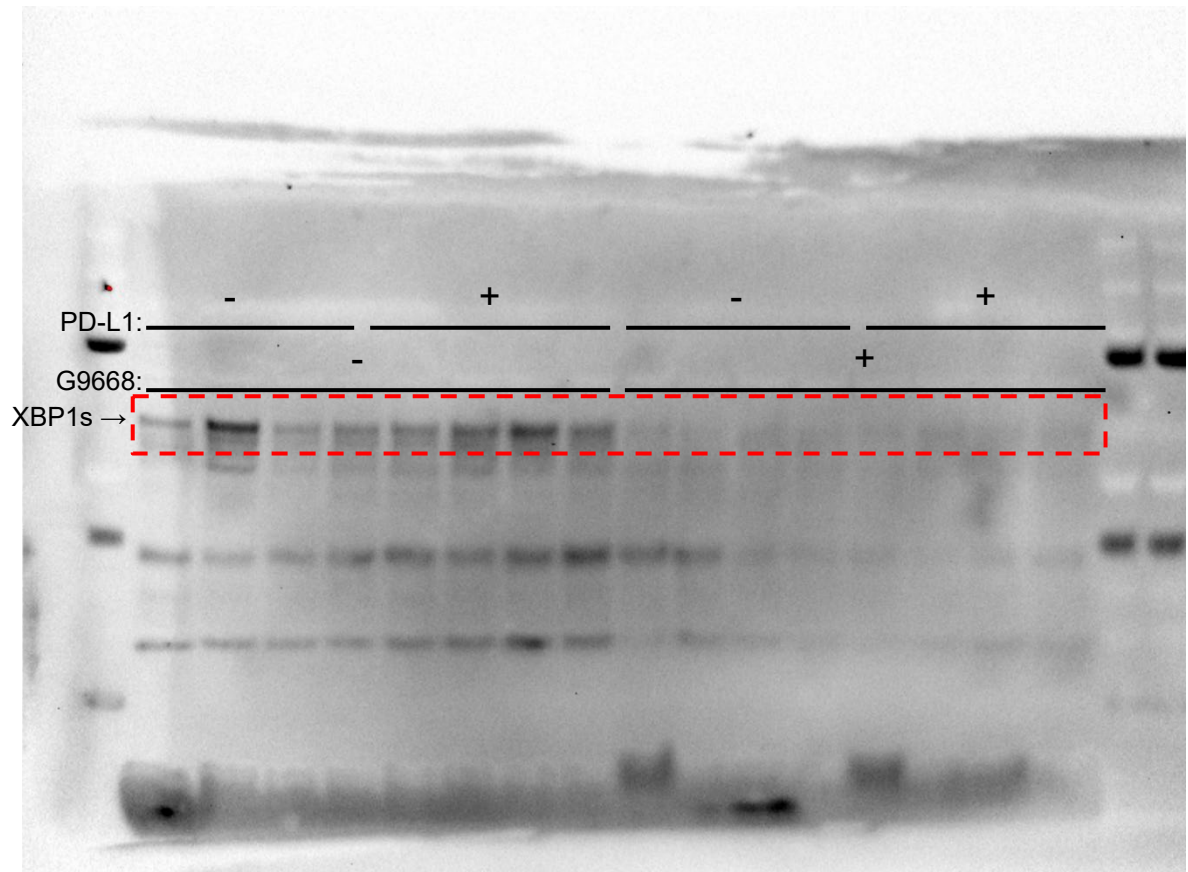
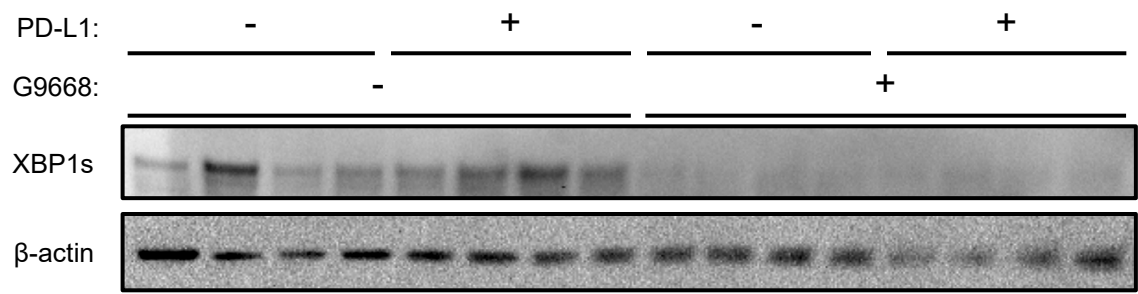


Figure S6. IRE1 α inhibition attenuates EMT6 tumor growth and synergizes with anti-PD-L1 antibody. (D) Mice were inoculated with WT or IRE1 α KO EMT6 cells, grouped out 7 days afterwards and treated with vehicle, G9668 (250 mg/kg, BID), anti-PD-L1 antibody (10 mg/kg at first dose, 5 mg/kg BIW thereafter), or the combination. **(D)** IRE1 α activation was analyzed by IB.

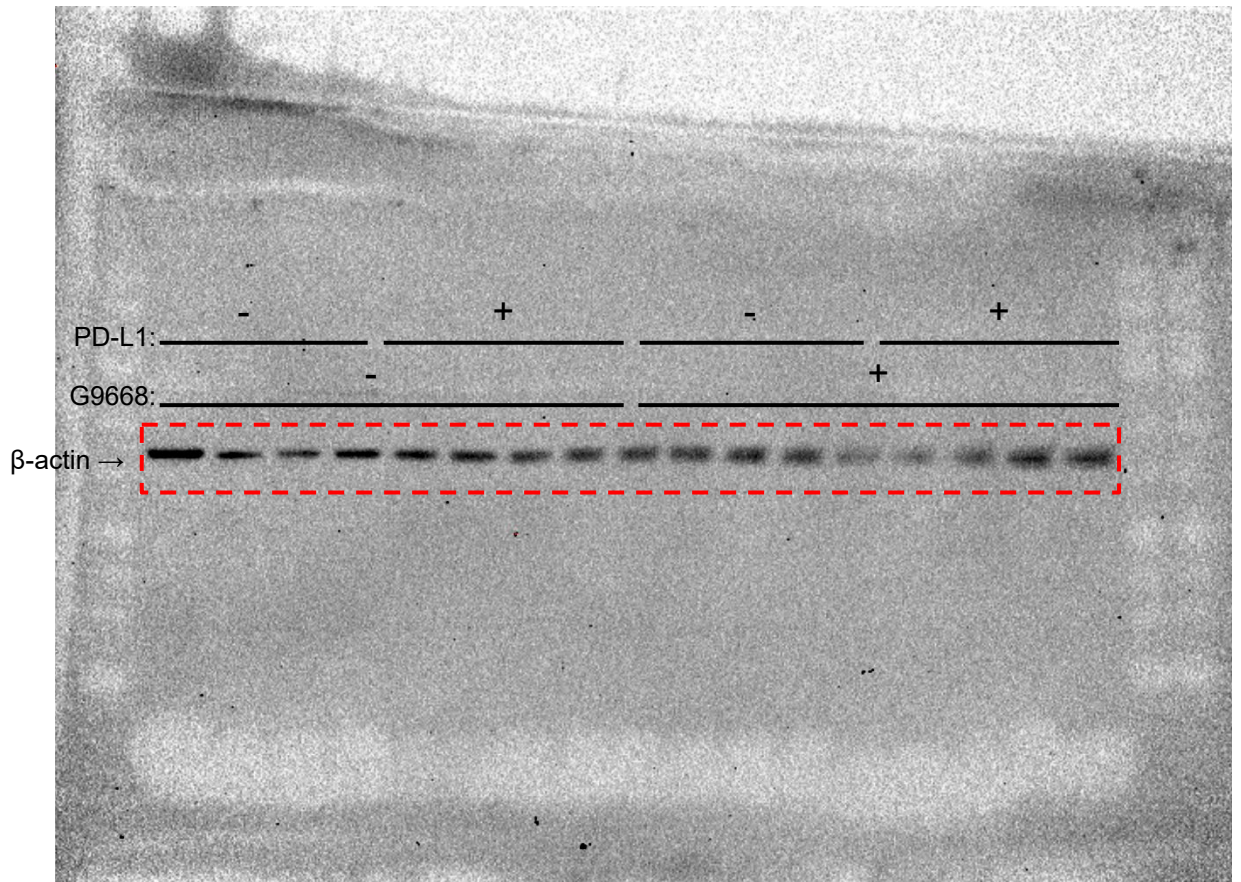
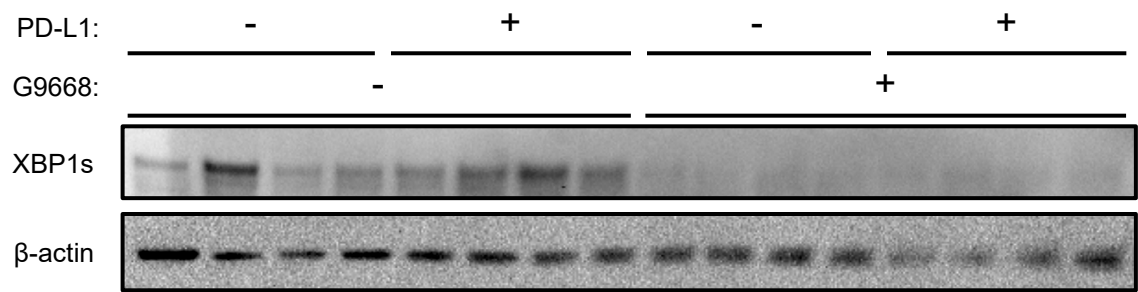


Figure S6. IRE1 α inhibition attenuates EMT6 tumor growth and synergizes with anti-PD-L1 antibody. (D) Mice were inoculated with WT or IRE1 α KO EMT6 cells, grouped out 7 days afterwards and treated with vehicle, G9668 (250 mg/kg, BID), anti-PD-L1 antibody (10 mg/kg at first dose, 5 mg/kg BIW thereafter), or the combination. **(D)** IRE1 α activation was analyzed by IB.