

Figure S5. IRE1α inhibition attenuates 4T1 tumor growth. (B) Animals were inoculated s.c. with parental or IRE1α KO 4T1 cells and tumor growth was monitored over 25 days, IB analysis of total tumor lysates **(B)** presented.

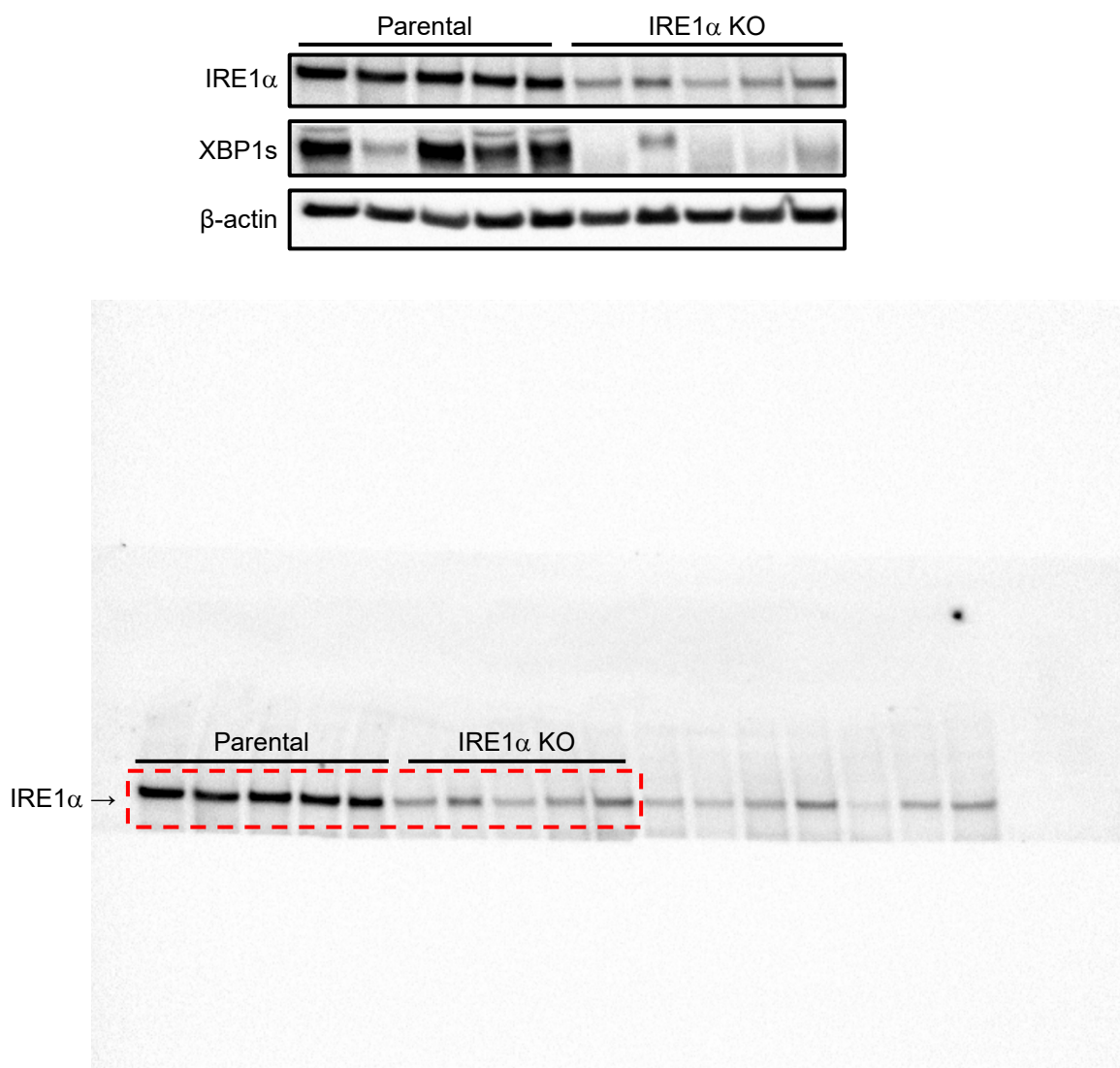


Figure S5. IRE1α inhibition attenuates 4T1 tumor growth. (B) Animals were inoculated s.c. with parental or IRE1α KO 4T1 cells and tumor growth was monitored over 25 days, IB analysis of total tumor lysates **(B)** presented.

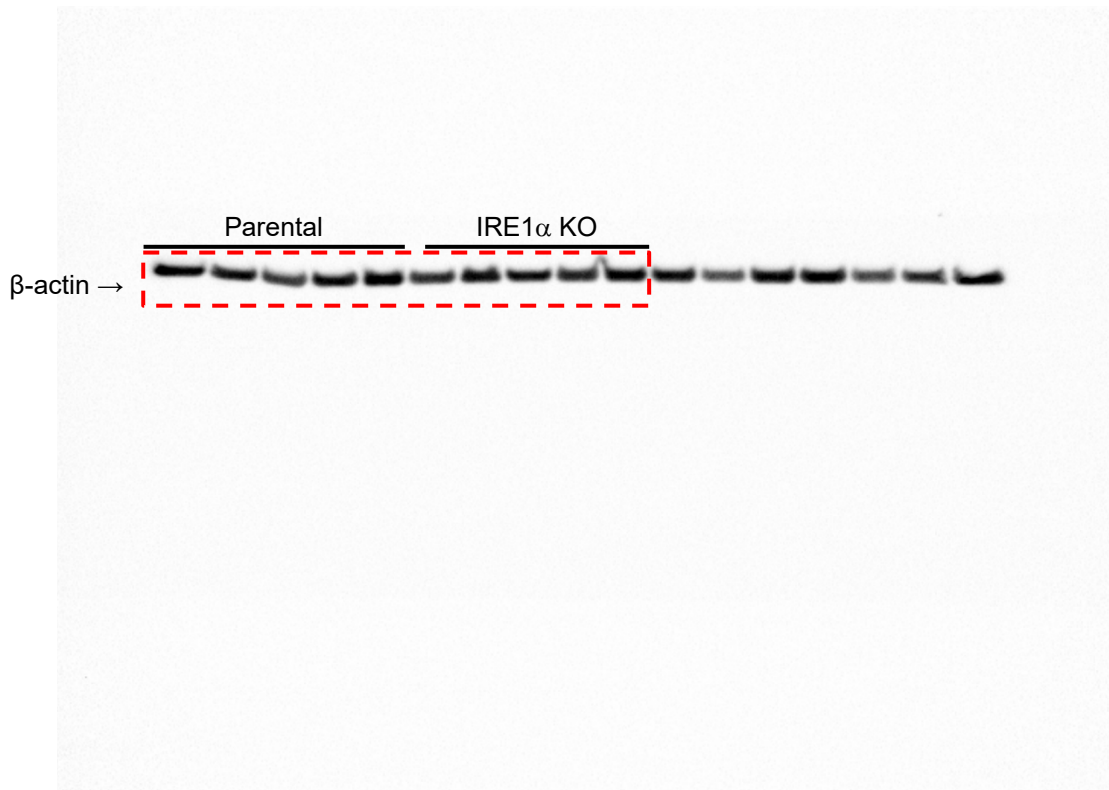
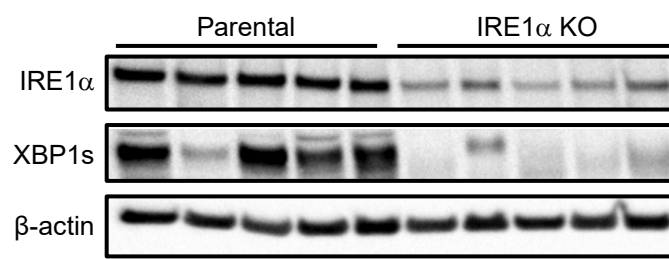


Figure S5. IRE1α inhibition attenuates 4T1 tumor growth. (B) Animals were inoculated s.c. with parental or IRE1α KO 4T1 cells and tumor growth was monitored over 25 days, IB analysis of total tumor lysates **(B)** presented.

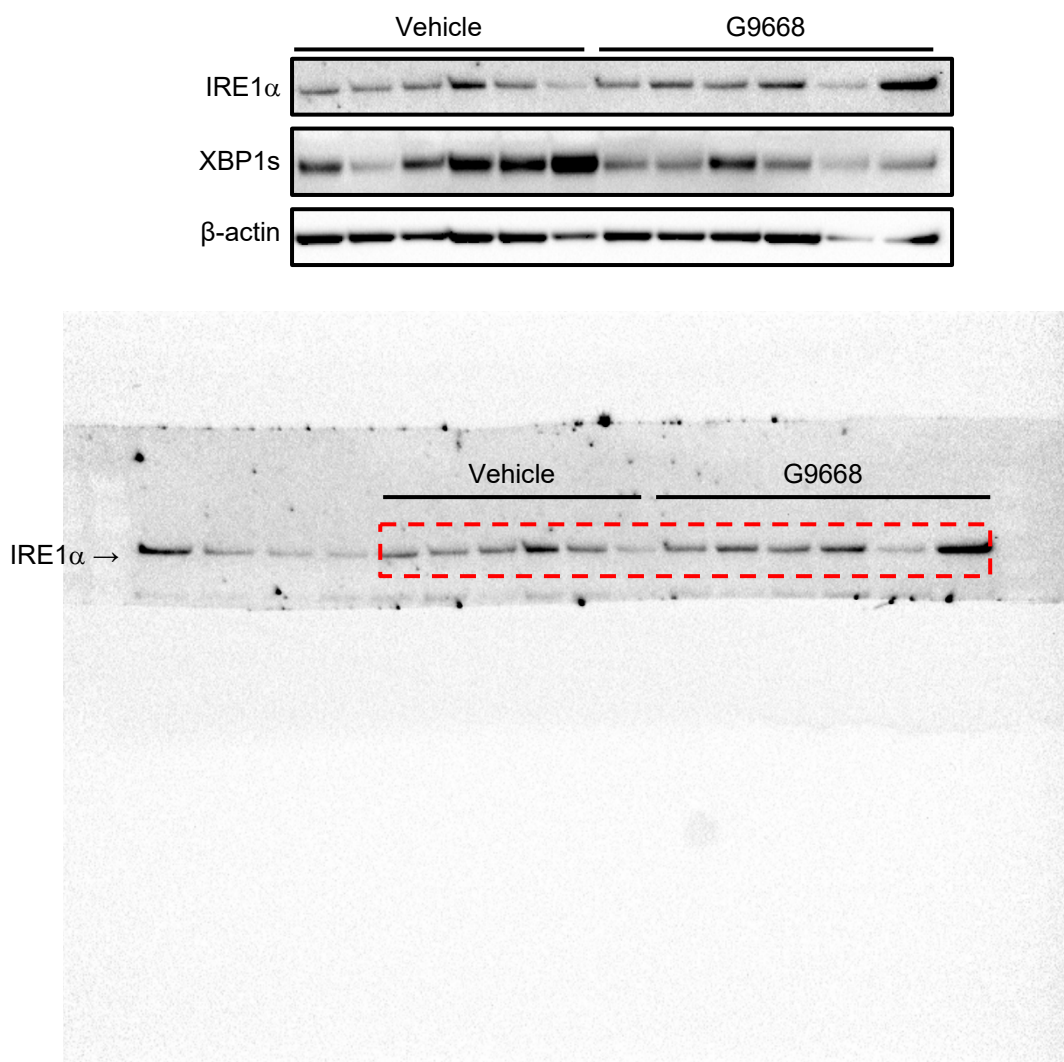


Figure S5. IRE1α inhibition attenuates 4T1 tumor growth. (D) Mice were inoculated s.c. with 4T1 cells, grouped out 7 days afterwards and treated with vehicle or G9668 (250 mg/kg, BID). IRE1α expression and activation were analyzed by IB.

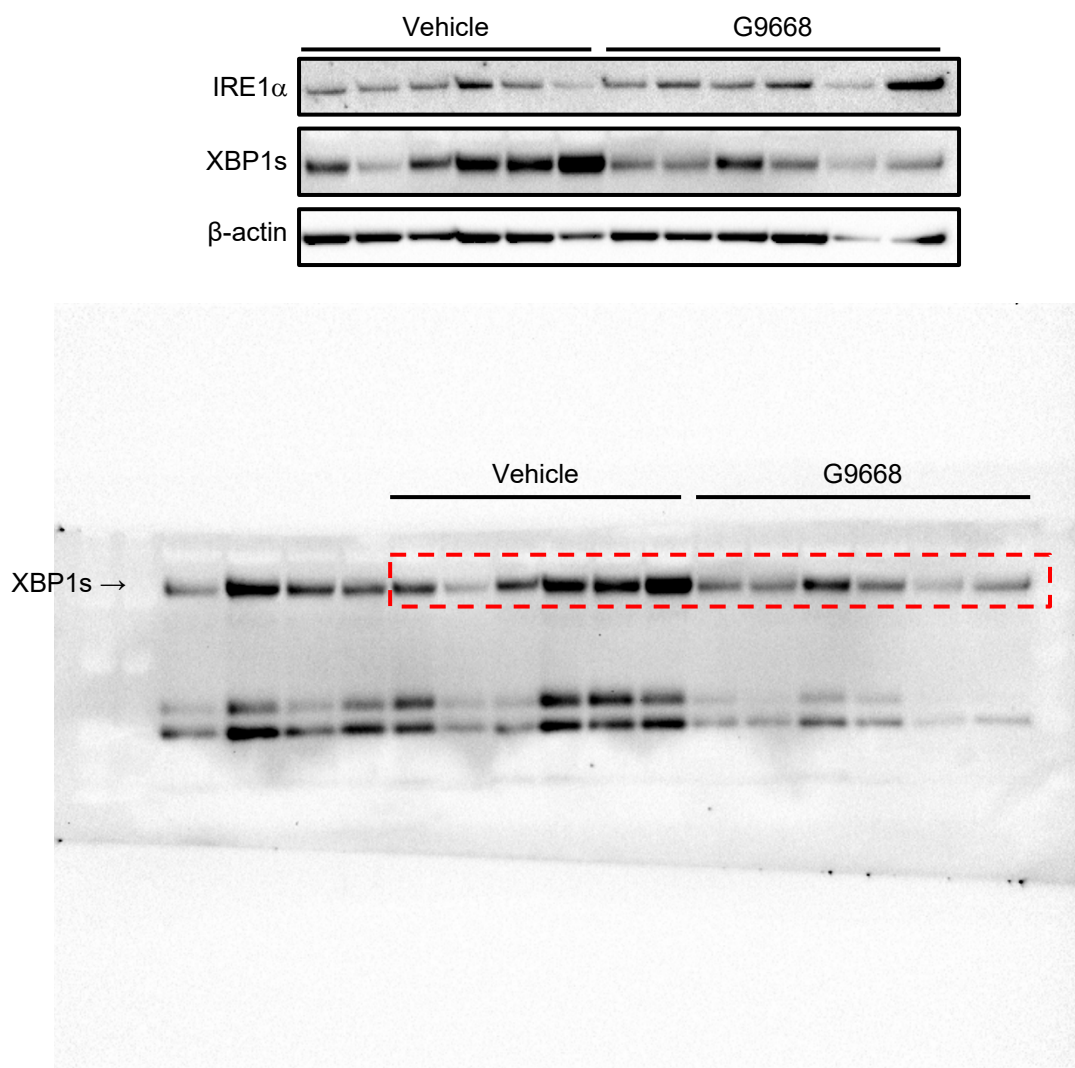


Figure S5. IRE1α inhibition attenuates 4T1 tumor growth. (D) Mice were inoculated s.c. with 4T1 cells, grouped out 7 days afterwards and treated with vehicle or G9668 (250 mg/kg, BID). IRE1α expression and activation were analyzed by IB.

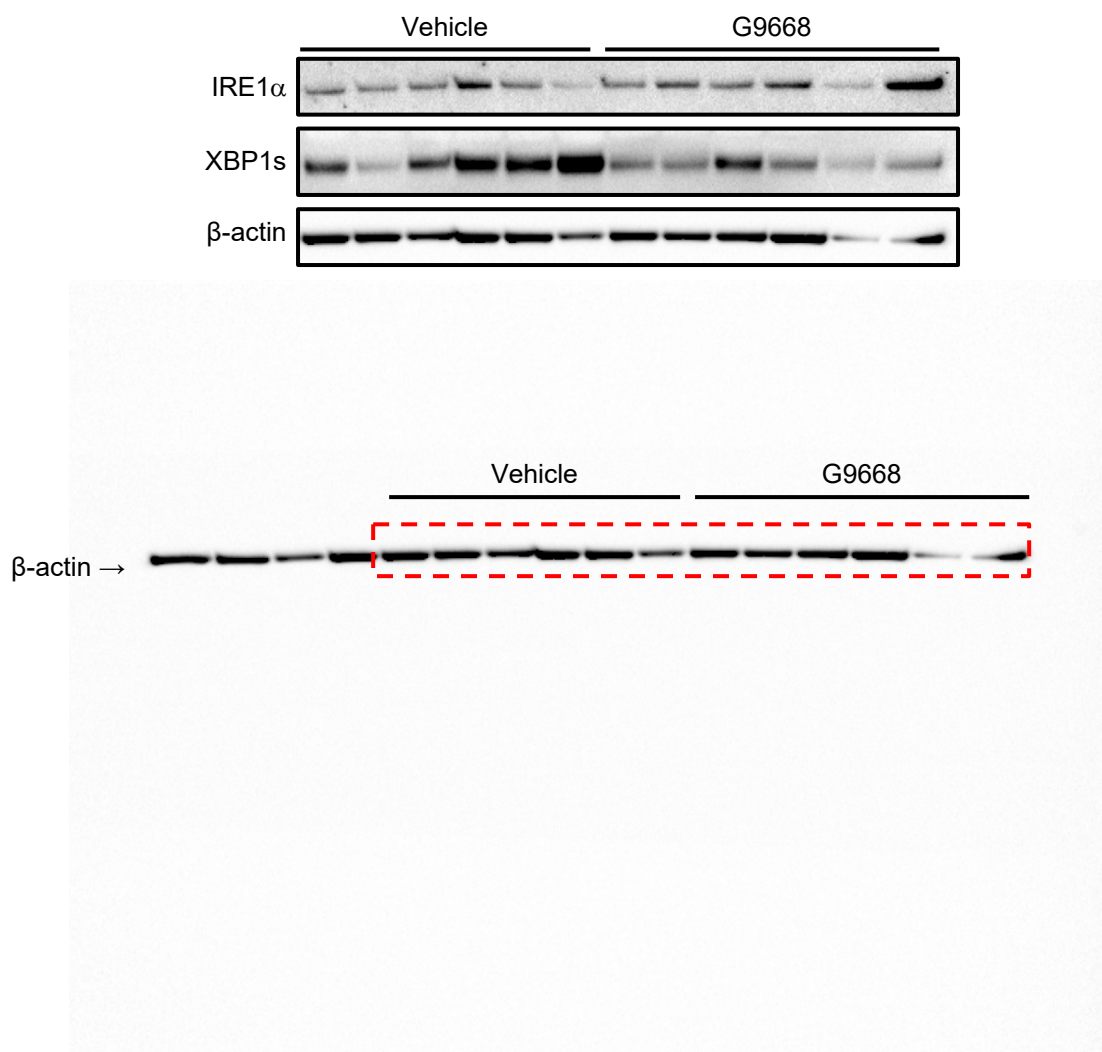


Figure S5. IRE1α inhibition attenuates 4T1 tumor growth. (D) Mice were inoculated s.c. with 4T1 cells, grouped out 7 days afterwards and treated with vehicle or G9668 (250 mg/kg, BID). IRE1α expression and activation were analyzed by IB.