

IB: Human Fc
Ovalbumin peptide array

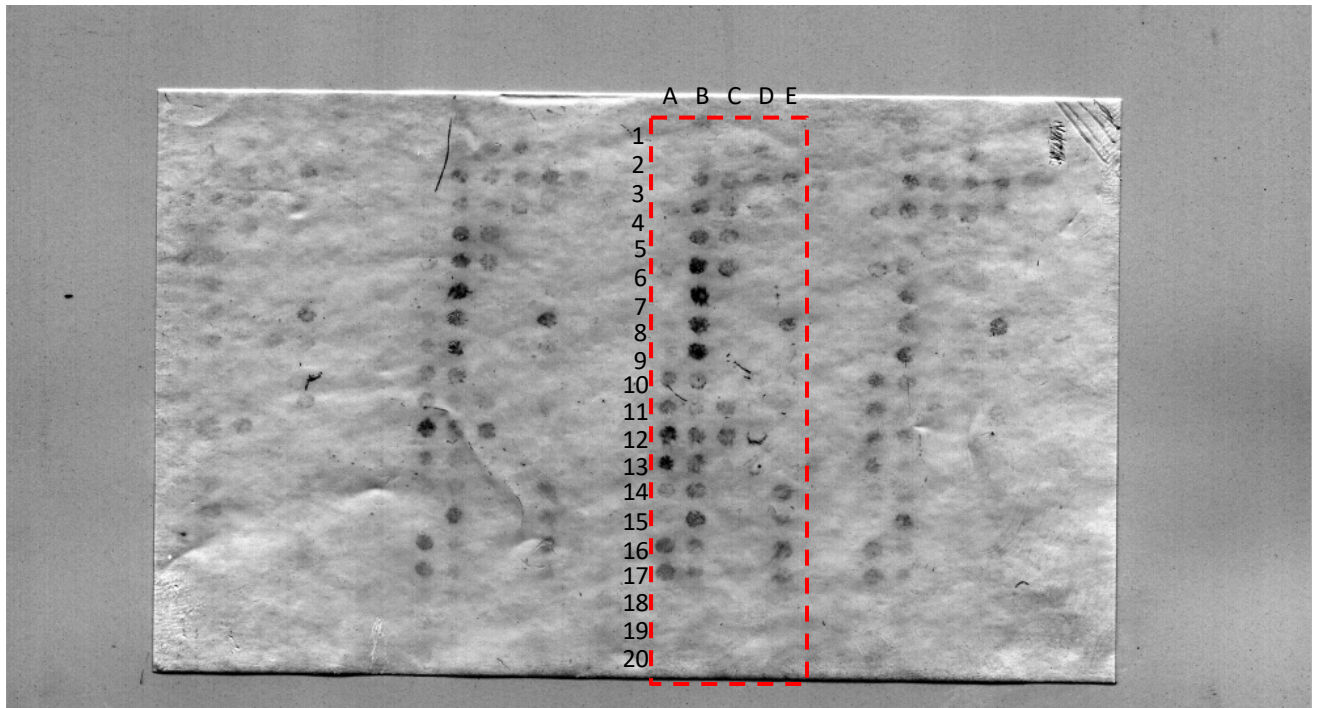
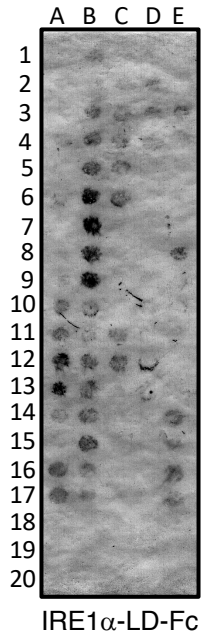


Figure S2. Antigen-derived peptides can directly engage IRE1 α . (A) A tiled 18 aa-long peptide array spanning ovalbumin was incubated with IRE1 α LD-Fc (500 nM) followed by IB analysis with an HRP-conjugated anti-human Fc antibody.

IB: Human Fc
Ovalbumin peptide array

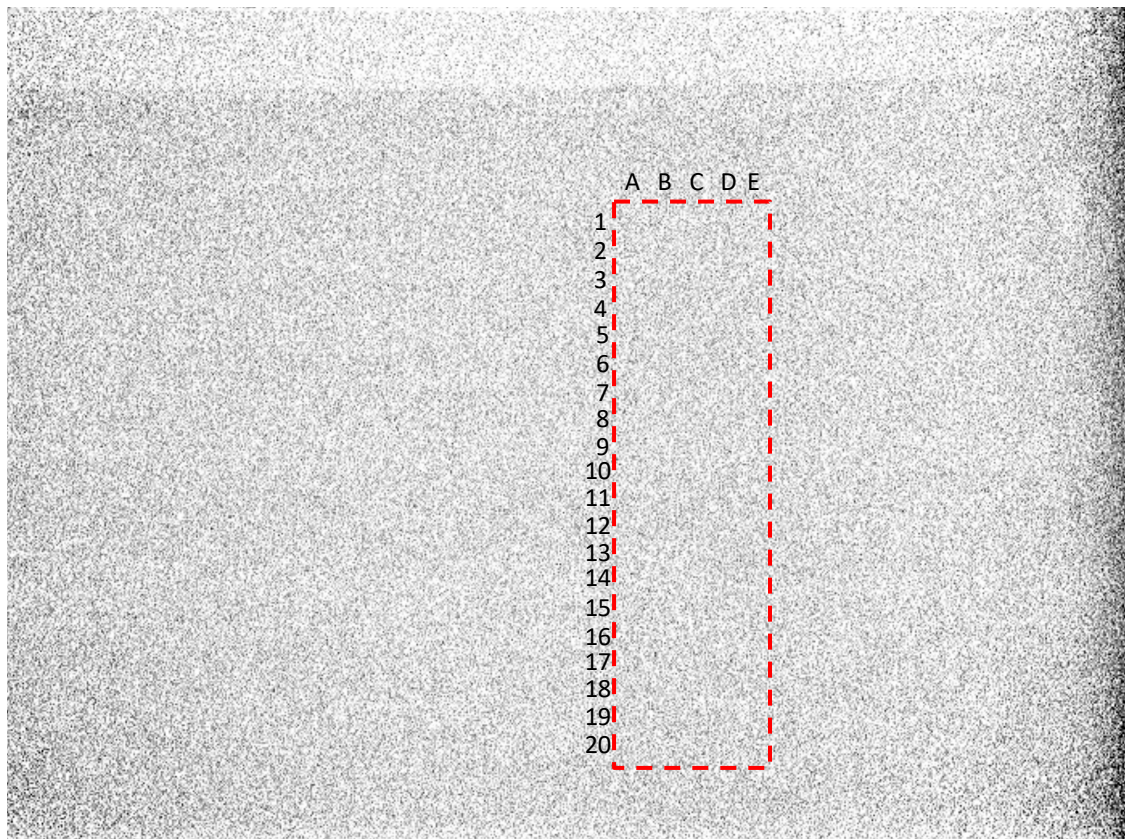
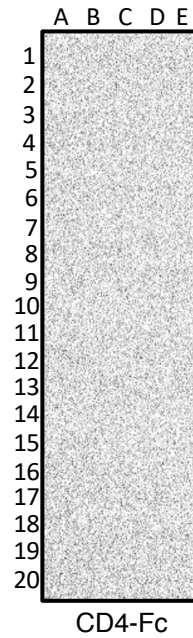


Figure S2. Antigen-derived peptides can directly engage IRE1 α . (A) A tiled 18 aa-long peptide array spanning ovalbumin was incubated with IRE1 α LD-Fc (500 nM) followed by IB analysis with an HRP-conjugated anti-human Fc antibody.