

David et al., <http://www.jcb.org/cgi/content/full/jcb.201112145/DC1>

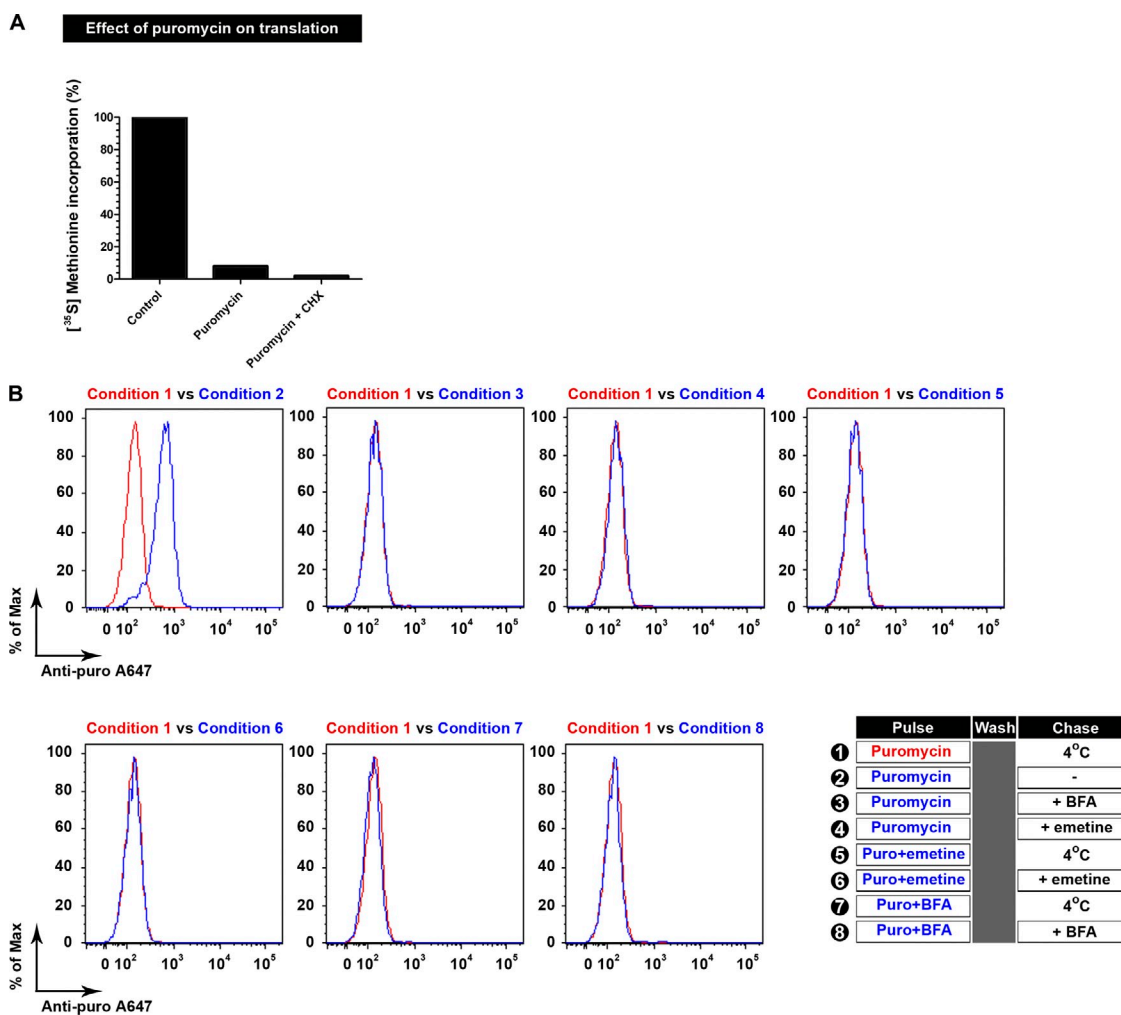


Figure S1. **Effectiveness of PMY.** (A) Metabolic labeling of HeLa cells with [³⁵S]methionine. HeLa cells were incubated at 37°C with PMY (Puro) alone or in the presence of CHX, and TCA-insoluble radioactivity was measured by scintillation counting. CHX and PMY combination shows nearly complete inhibition of protein synthesis. The data shown are from a single representative experiment out of two repeats. (B) Raw flow cytometry data from Fig. 1 E.

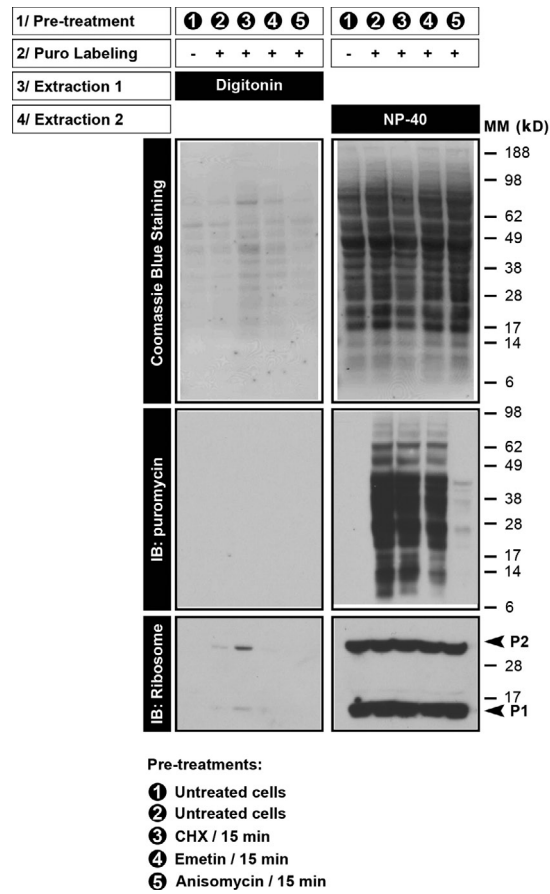


Figure S2. **Immunoblotting of detergent fractions of PMY-labeled cells.** Coomassie blue staining of membranes demonstrates the equivalence of extraction between different pretreatment conditions. Puro, PMY; MM, molecular mass; IB, immunoblot.

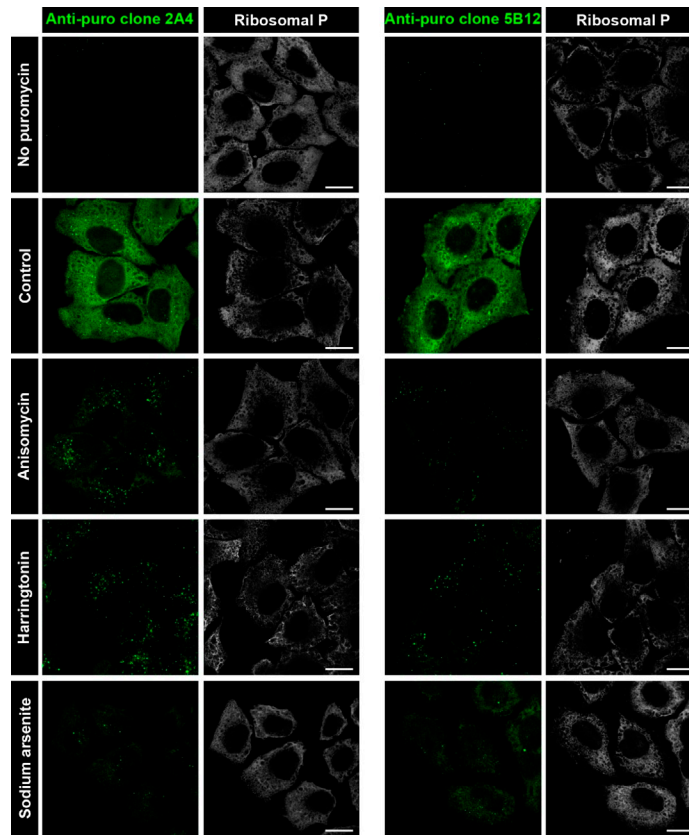


Figure S3. **Characterization of anti-PMY mAbs.** HeLa cells were pretreated for 15 min with the indicated inhibitor and labeled by the RPM using different anti-PMY mAbs generated at the National Institute of Allergy and Infectious Diseases. Each mAb stains indistinguishably from 12D10, the clone used in this study. Bars, 10 μ m. puro, PMY.